



Catalog of bungalows 2022

From modern fancy to cozy eco



BALT-HAUS

www.balt-haus.com



About our bungalows

We have a wide collection of tiny houses to suit the needs of different kinds of people. Our stylish modern tiny houses will fit perfectly in the area of your chosen plot or campsite. It will be not only eye-catching construction, but also a comfortable, safe house for living.

Benefits

- Lower price
- Significantly shorter execution time
- Low maintenance costs
- Energy efficient and eco – friendly
- Mobility and independence
- Safe and durable
- Modern design





**TAKE A LOOK INTO OUR TINY HOUSES
RANGE AND CHOOSE YOUR HOLIDAYS
HOUSE, GARDENS SHED OR STYLISH
WORKSPACE**

www.balt-haus.com

Tiny house- MM-1

36m²

Roof outside: 250 mm insulation in the roof. Rukki classic original metal roofing and drainage system.

Roof inside: Plasterboard partition.

Walls outside: Facade from dry, planed boards, painted with high-quality water-based facade paints produced in Germany and Sweden.

Walls inside: Double plasterboard partitions.

Floor: insulation 150 mm polystyrene; carcass protection against rodents.

Floor inside: Flooring plasterboard.

Windows: PVC windows and external doors with GEALAN 8000 7-chamber profile, two-chamber package with 3 glasses.

Electrical installation: Wired electrical wiring, complies with EU standard, switch cabinet with safety devices, built-in contacts and switches for branch boxes

Plumbing installation: Sewerage and cold water inlet in the bathroom and kitchen.

Price: From 1300 Eur/m² + VAT



Tiny House MM-2

60m²



60m²

Roof outside: 250 mm insulation in the roof.
Rukki classic original metal roofing and drainage system.

Roof inside: Plasterboard partition.

Walls outside: Facade from dry, planed boards, painted with high-quality water-based facade paints produced in Germany and Sweden.

Walls inside: Double plasterboard partitions.

Floor: insulation 150 mm polystyrene; carcass protection against rodents.

Floor inside: Flooring plasterboard.

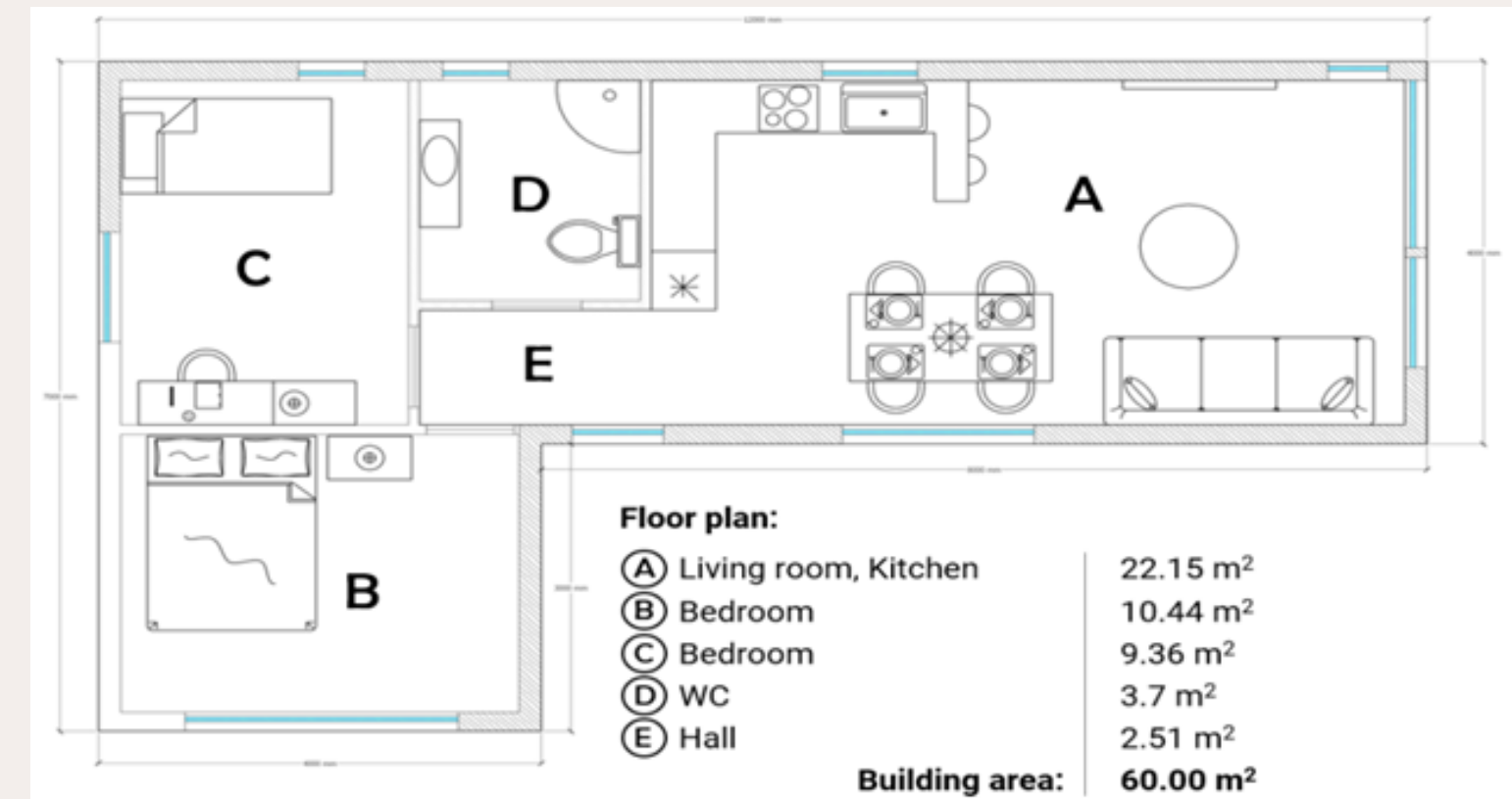
Windows: PVC windows and external doors with GEALAN 8000 7-chamber profile, two-chamber package with 3 glasses.

Electrical installation: Wired electrical wiring, complies with EU standard, switch cabinet with safety devices, built-in contacts and switches for branch boxes

Plumbing installation: Sewerage and cold water inlet in the bathroom and kitchen

Price: From 1300 Eur/m² + VAT

Tiny House MM-2



Tiny house- MM-3

54m²

Roof outside: 250 mm insulation in the roof. Rukki classic original metal roofing and drainage system.

Roof inside: Plasterboard partition.

Walls outside: Facade from dry, planed boards, painted with high-quality water-based facade

paints produced in Germany and Sweden.

Walls inside: Double plasterboard partitions.

Floor: insulation 150 mm polystyrene; carcass protection against rodents.

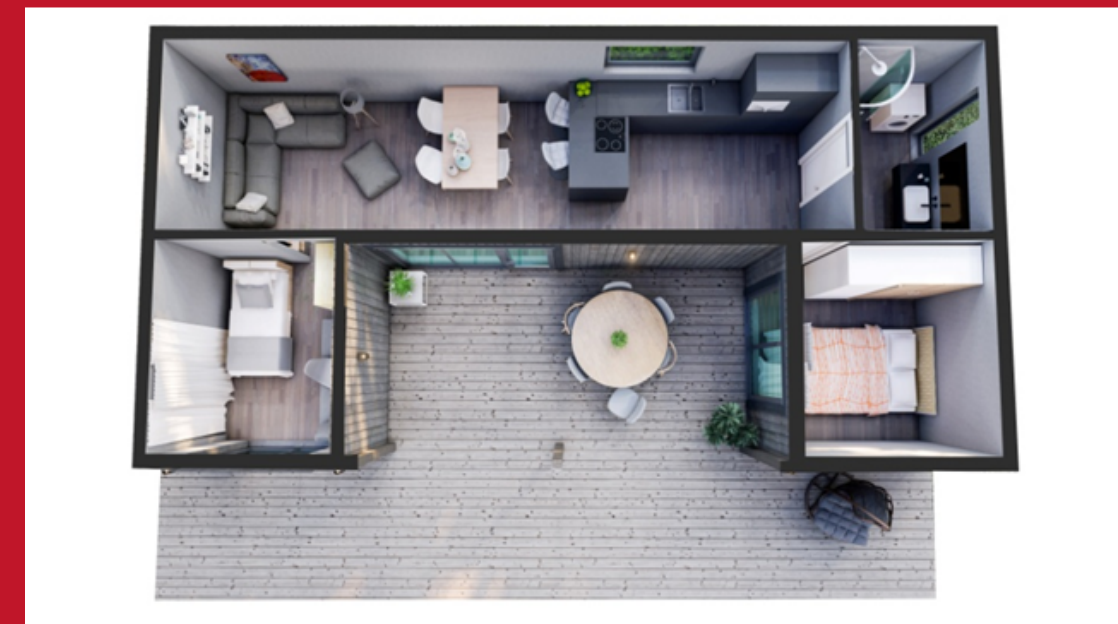
Floor inside: Flooring plasterboard.

Windows: PVC windows and external doors with GEALAN 8000 7-chamber profile, two-chamber package with 3 glasses.

Electrical installation: Wired electrical wiring, complies with EU standard, switch cabinet with safety devices, built-in contacts and switches for branch boxes

Plumbing installation: Sewerage and cold water inlet in the bathroom and kitchen.

Price: From 1300 Eur/m² + VAT





Tiny House MM-4

40m²



Roof outside: 250 mm insulation in the roof.
Rukki classic original metal roofing and drainage system.
Roof inside: Plasterboard partition.

Walls outside: Facade from dry, planed boards, painted with high-quality water-based facade paints produced in Germany and Sweden.
Walls inside: Double plasterboard partitions.

Floor: insulation 150 mm polystyrene; carcass protection against rodents.
Floor inside: Flooring plasterboard.

Windows: PVC windows and external doors with GEALAN 8000 7-chamber profile, two-chamber package with 3 glasses.

Electrical installation: Wired electrical wiring, complies with EU standard, switch cabinet with safety devices, built-in contacts and switches for branch boxes.
Plumbing installation: Sewerage and cold water inlet in the bathroom and kitchen.

Price: From 1300 Eur/m² + VAT





Tiny House MM-5

72m²



Roof outside: 250 mm insulation in the roof. Rukki classic original metal roofing and drainage system.

Roof inside: Plasterboard partition.

Walls outside: Facade from dry, planed boards, painted with high-quality water-based facade paints produced in Germany and Sweden.

Walls inside: Double plasterboard partitions.

Floor: insulation 150 mm polystyrene; carcass protection against rodents.

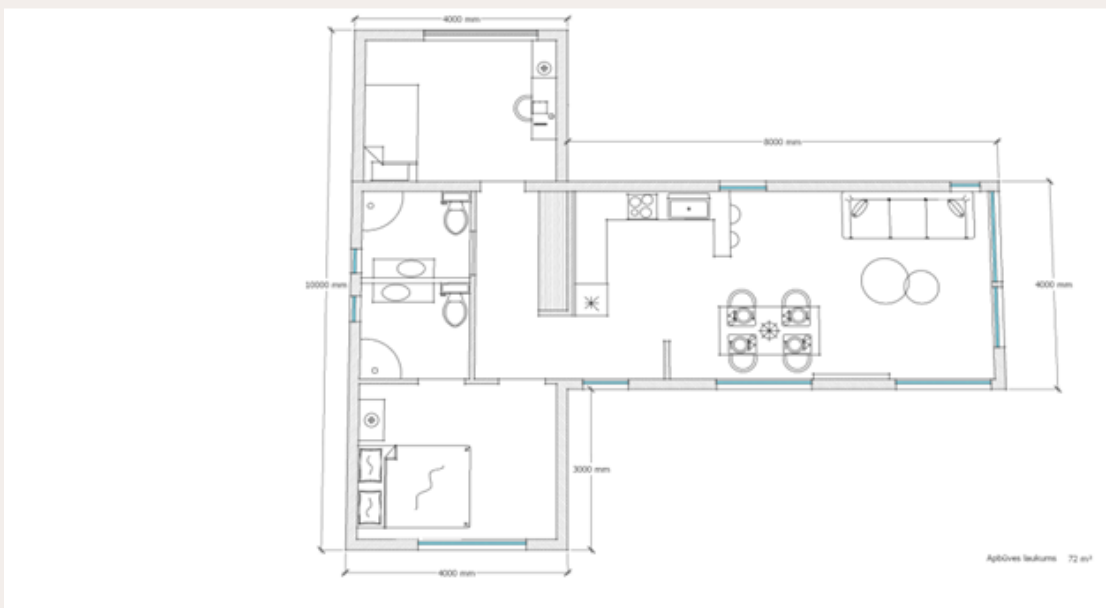
Floor inside: Flooring plasterboard.

Windows: PVC windows and external doors with GEALAN 8000 7-chamber profile, two-chamber package with 3 glasses.

Electrical installation: Wired electrical wiring, complies with EU standard, switch cabinet with safety devices, built-in contacts and switches for branch boxes.

Plumbing installation: Sewerage and cold water inlet in the bathroom and kitchen.

Price: From 1300 Eur/m² + VAT



Tiny House MB-01

24m²; 40m²; 55,12m², 100m²

The house is suitable for living all year round.

3-pane aluminum/wooden windows/ plastic windows (depends on the house size)

The insulation layer 300mm or 200mm (depends on the house size)

Roto roof windows.

Electrical control.

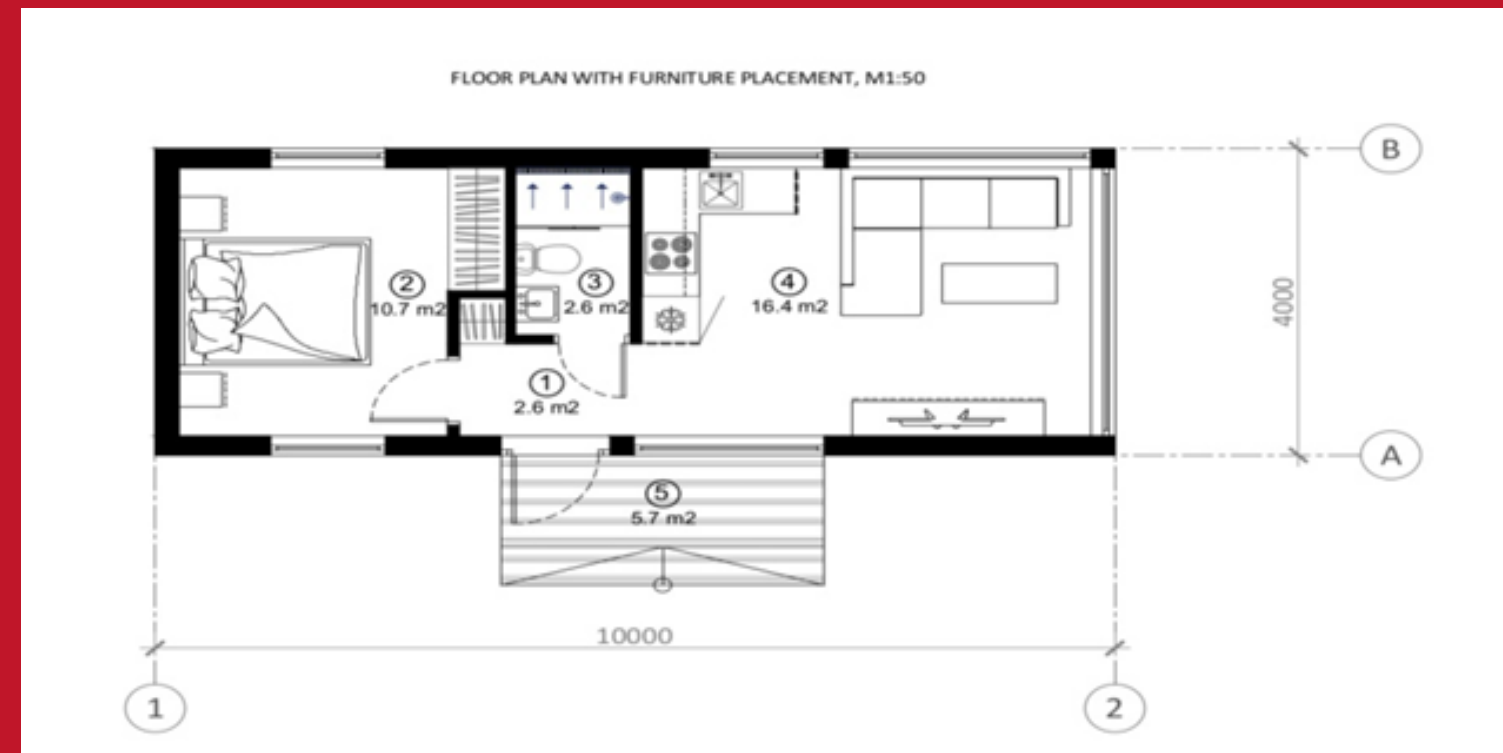
Available in partial finish or Full finish.

Price: from 1900 Eur + VAT /m²



Tiny House BO-01

40m²



40m²

Tiny House BO-01

Roof outside: 250 mm insulation in the roof.

Roof inside: Painted plasterboard partition, or board cladding.

Walls outside: Insulation 250mm. Facade from dry, planed boards, painted with high-quality water-based facade paints.

Walls inside: Painted plasterboard partition, or board cladding.

Floor: insulation 250 mm, carcass protection against rodents.

Floor inside: Flooring plasterboard, laminate.

Windows: PVC windows and external doors with 3 glasses.

Electrical installation: Wired electrical wiring, complies with EU standard, switch cabinet with safety devices, built-in contacts and switches.

Plumbing installation: Sewerage, cold and hot water inlet in the bathroom and kitchen. Toilet bowl, shower cabin, sink, mixers. Water heating boiler 75l.

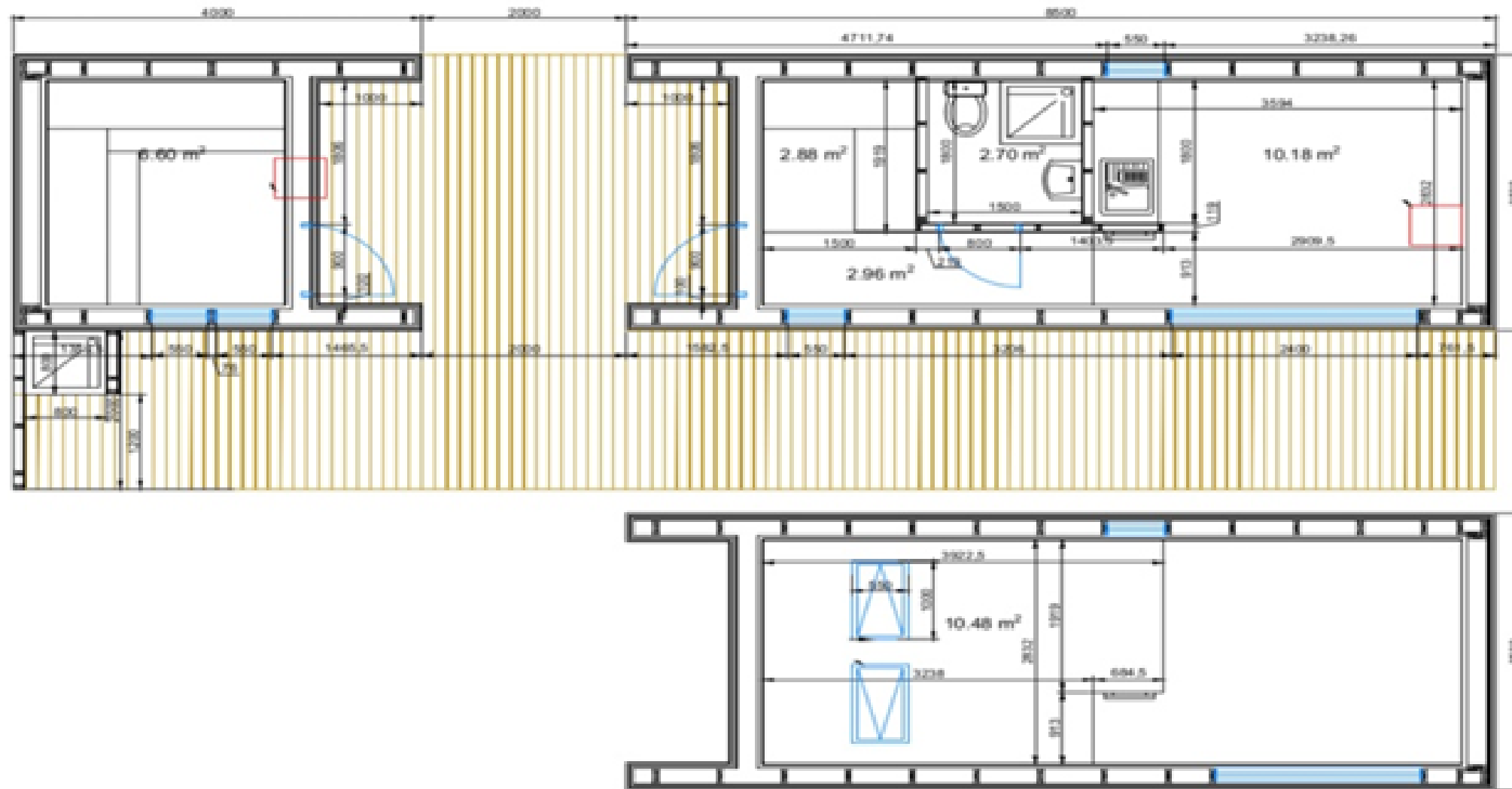
Heating: Electric heaters.

Kitchen: Ikea furniture without kitchen equipment. Sink and mixer.

Price: From 1300 Eur/m² + VAT

Tiny House BO-02

46m²



46m²

Tiny House BO-02

house size: 36m² and sauna house: 10m²

Roof outside: 250 mm insulation in the roof. Rukki classic original metal roofing and drainage system

Roof inside: Painted plasterboard partition, or board cladding.

Walls outside: Insulation 250mm. Facade from dry, planed boards, painted with high-quality water-based facade paints.

Walls inside: Painted plasterboard partition, or board cladding.

Floor: insulation 250 mm, carcass protection against rodents.

Floor inside: Flooring plasterboard, laminate.

Windows: PVC windows and external doors with 3 glasses.

Electrical installation: Wired electrical wiring, complies with EU standard, switch cabinet with safety devices, built-in contacts and switches.

Plumbing installation: Sewerage, cold and hot water inlet in the bathroom and kitchen. Toilet bowl, shower cabin, sink, mixers.

Water heating boiler 75l.

Heating: Electric heaters.

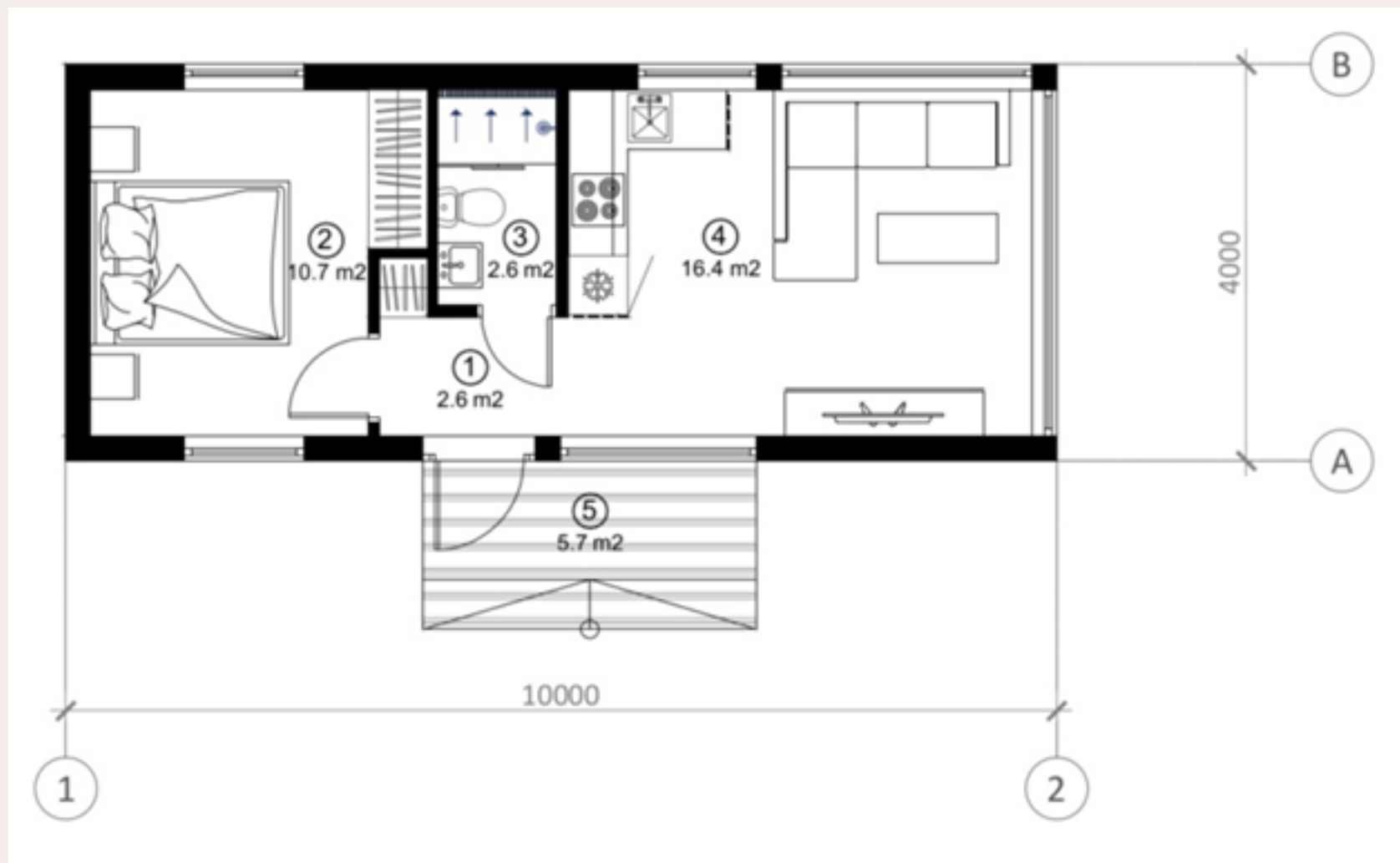
Kitchen: Ikea furniture without kitchen equipment. Sink and mixer.

Terrace: Pine terrace boards.

Price: From 1300 Eur/m² + VAT

Tiny House BO-03

40m²



40m²

Tiny House BO-03

Roof outside: 250 mm insulation in the roof.

Roof inside: Painted plasterboard partition, or board cladding.

Walls outside: Insulation 250mm. Facade from dry, planed boards, painted with high-quality water-based facade paints.

Walls inside: Painted plasterboard partition, or board cladding.

Floor: insulation 250 mm, carcass protection against rodents.

Floor inside: Flooring plasterboard, laminate.

Windows: PVC windows and external doors with 3 glasses.

Electrical installation: Wired electrical wiring, complies with EU standard, switch cabinet with safety devices, built-in contacts and switches.

Plumbing installation: Sewerage, cold and hot water inlet in the bathroom and kitchen. Toilet bowl, shower cabin, sink, mixers. Water heating boiler 75l.

Heating: Electric heaters.

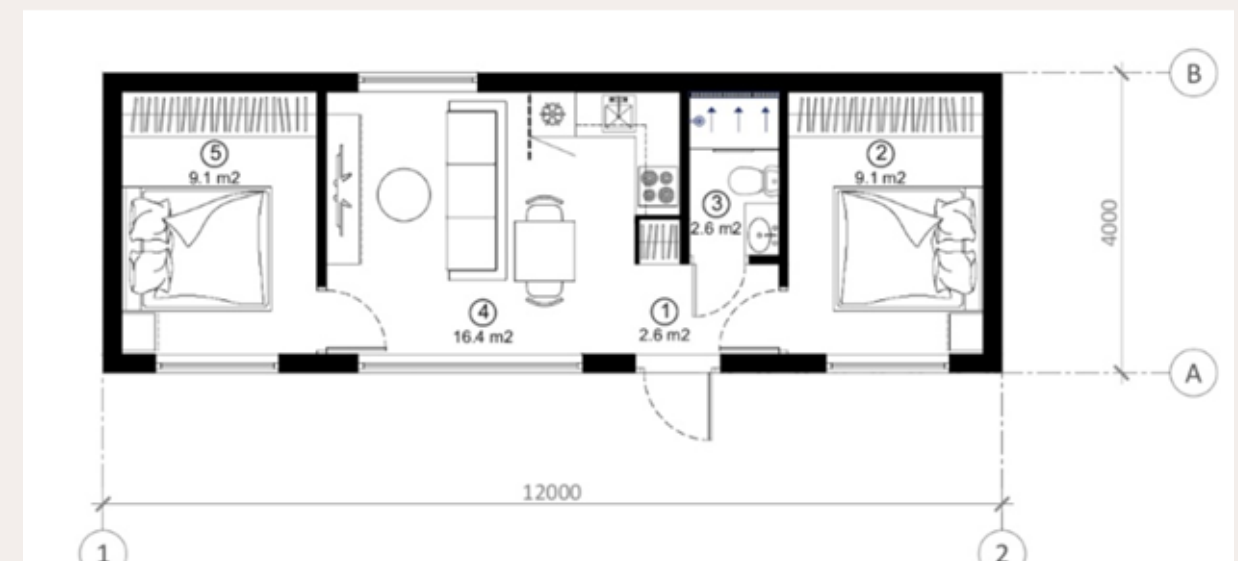
Kitchen: Ikea furniture without kitchen equipment. Sink and mixer.

Terrace: Pine terrace boards.

Price: From 1300 Eur/m² + VAT

Tiny House BO-04

40m²



40m²

Tiny House BO-04

Roof outside: 250 mm insulation in the roof. Rukki classic original metal roofing and drainage system
Roof inside: Painted plasterboard partition, or board cladding.

Walls outside: Insulation 250mm. Facade from dry, planed boards, painted with high-quality water-based facade paints.
Walls inside: Painted plasterboard partition, or board cladding.

Floor: insulation 250 mm, carcass protection against rodents.
Floor inside: Flooring plasterboard, laminate.

Windows: PVC windows and external doors with 3 glasses.

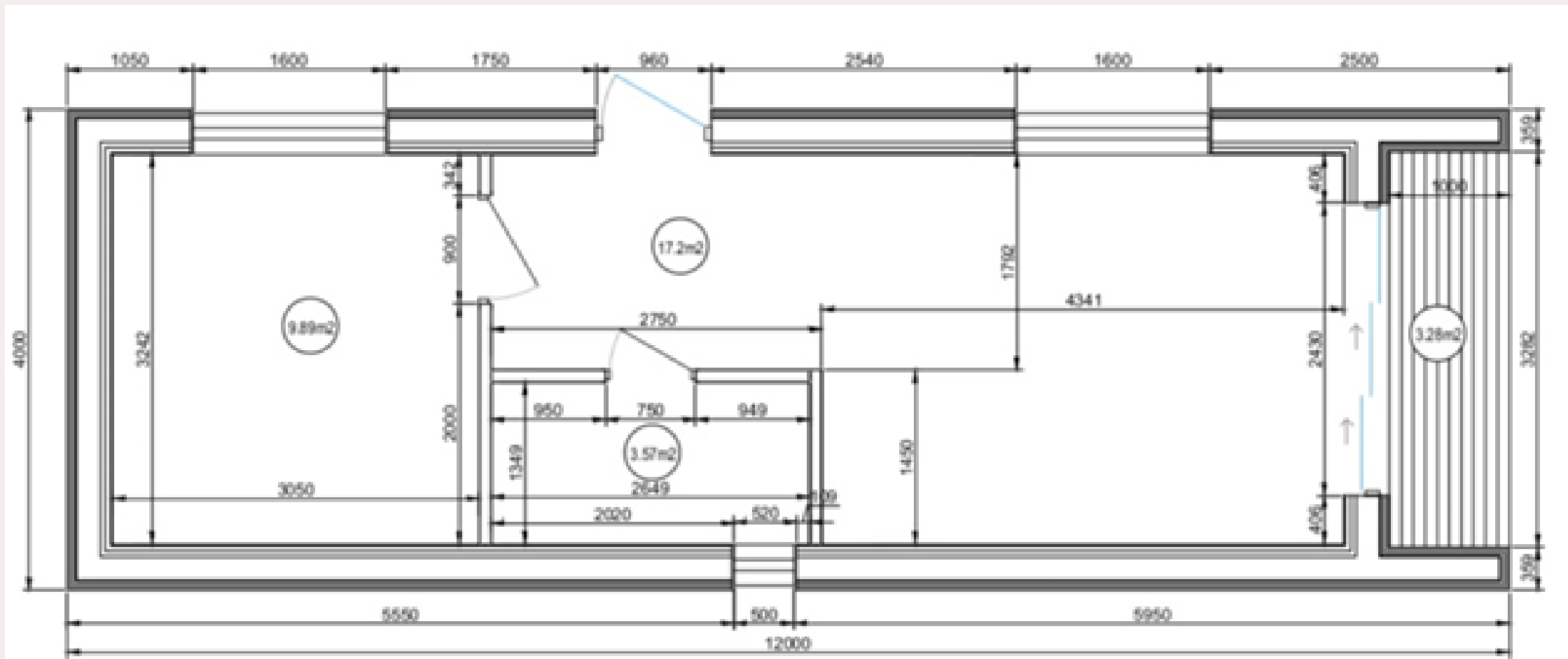
Electrical installation: Wired electrical wiring, complies with EU standard, switch cabinet with safety devices, built-in contacts and switches.
Plumbing installation: Sewerage, cold and hot water inlet in the bathroom and kitchen. Toilet bowl, shower cabin, sink, mixers. Water heating boiler 75l.

Heating: Electric heaters.
Kitchen: Ikea furniture without kitchen equipment. Sink and mixer.

Price: From 1300 Eur/m² + VAT

Tiny House BO-05

40m²



40m²

Tiny House BO-05

Roof outside: 250 mm insulation in the roof.

Roof inside: Painted plasterboard partition, or board cladding.

Walls outside: Insulation 250mm. Facade from dry, planed boards, painted with high-quality water-based facade paints.

Walls inside: Painted plasterboard partition, or board cladding.

Floor: insulation 250 mm, carcass protection against rodents.

Floor inside: Flooring plasterboard.

Windows: PVC windows and external doors with 3 glasses.

Electrical installation: Wired electrical wiring, complies with EU standard, switch cabinet with safety devices, built-in contacts and switches.

Plumbing installation: Sewerage, cold and hot water inlet in the bathroom and kitchen. Toilet bowl, shower cabin, sink, mixers.

Water heating boiler 75l.

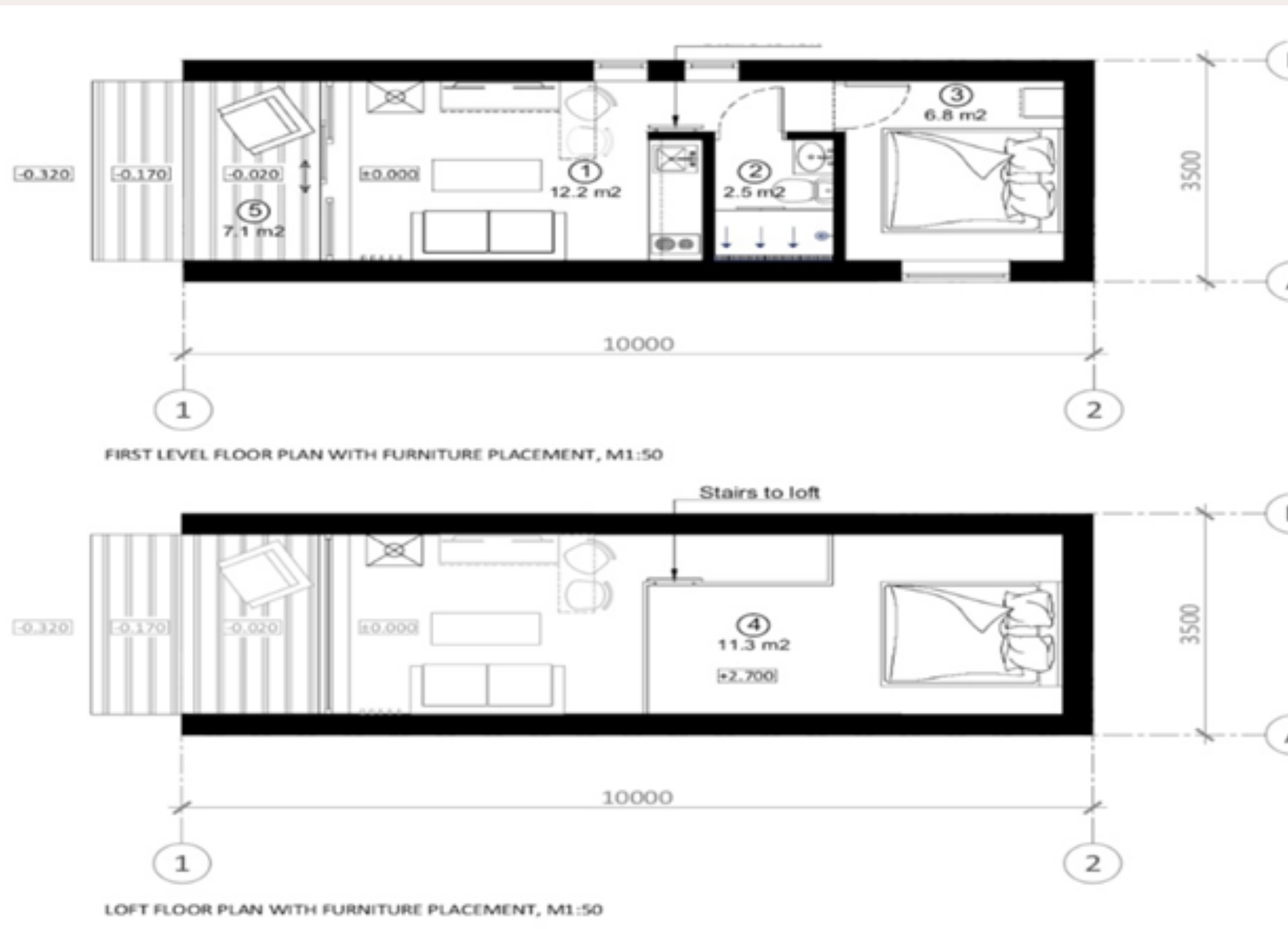
Heating: Electric heaters.

Kitchen: Ikea furniture without kitchen equipment. Sink and mixer.

Price: From 1300 Eur/m² + VAT

Tiny House BO-06

35m²



35m²

Tiny House BO-06

Roof outside: 250 mm insulation in the roof.
Roof inside: Painted plasterboard partition, or board cladding.

Walls outside: Insulation 250mm. Facade from dry, planed boards, painted with high-quality water-based facade paints.
Walls inside: Painted plasterboard partition, or board cladding.

Floor: insulation 250 mm, carcass protection against rodents.
Floor inside: Flooring plasterboard, laminate.

Windows: PVC windows and external doors with 3 glasses.

Electrical installation: Wired electrical wiring, complies with EU standard, switch cabinet with safety devices, built-in contacts and switches.

Plumbing installation: Sewerage, cold and hot water inlet in the bathroom and kitchen. Toilet bowl, shower cabin, sink, mixers. Water heating boiler 75l.

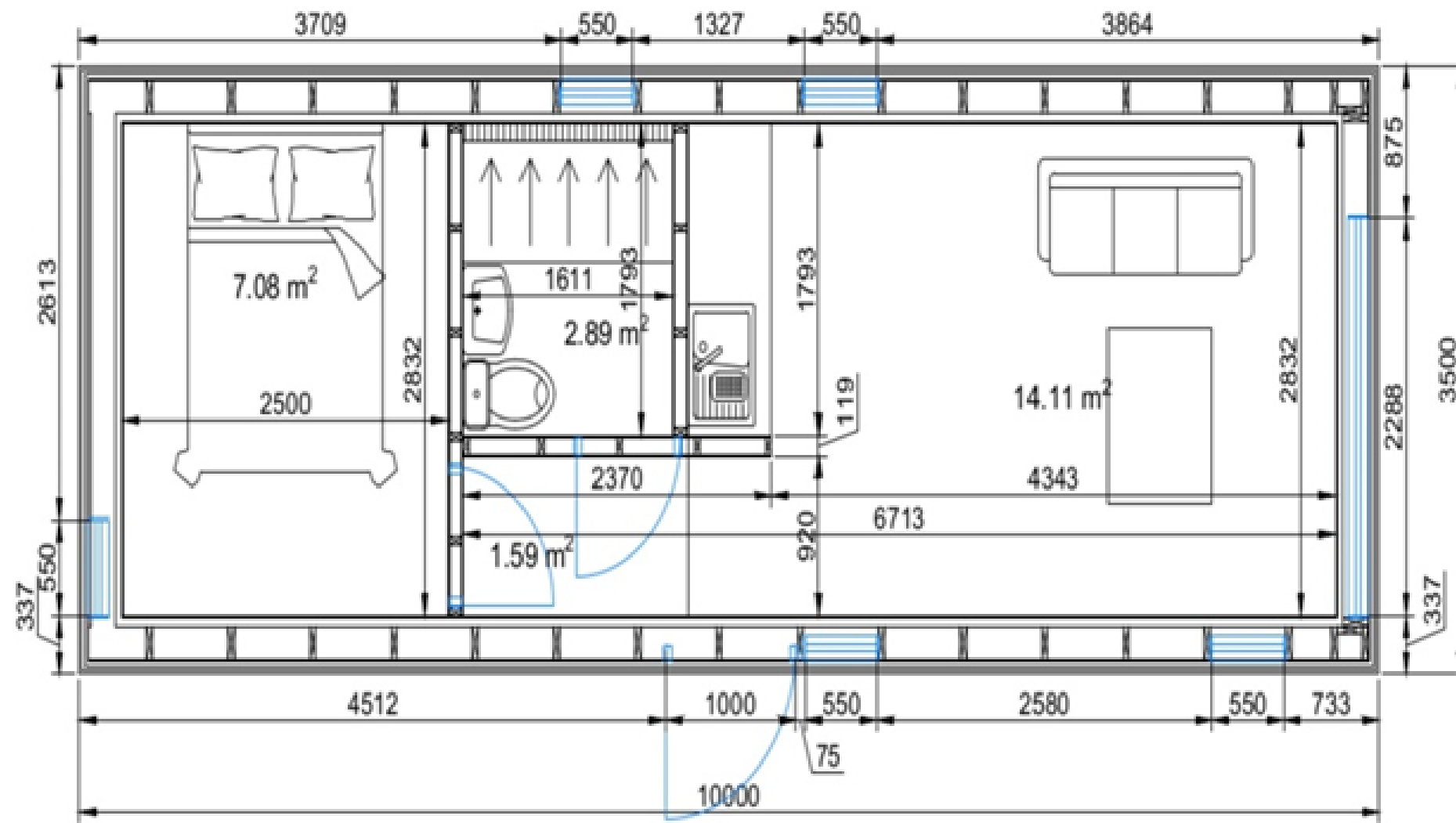
Heating: Electric heaters.

Kitchen: Ikea furniture without kitchen equipment. Sink and mixer.

Price: From 1300 Eur/m² + VAT

Tiny House BO-07

35m²



35m²

Tiny House BO-07

Roof outside: 250 mm insulation in the roof.

Roof inside: Painted plasterboard partition, or board cladding.

Walls outside: Insulation 250mm. Facade from metallic, or dry, planed boards, painted with high-quality water-based facade paints.

Walls inside: Painted plasterboard partition, or board cladding.

Floor: insulation 250 mm, carcass protection against rodents.

Floor inside: Flooring plasterboard, laminate.

Windows: PVC windows and external doors with 3 glasses.

Electrical installation: Wired electrical wiring, complies with EU standard, switch cabinet with safety devices, built-in contacts and switches.

Plumbing installation: Sewerage, cold and hot water inlet in the bathroom and kitchen. Toilet bowl, shower cabin, sink, mixers. Water heating boiler 75l.

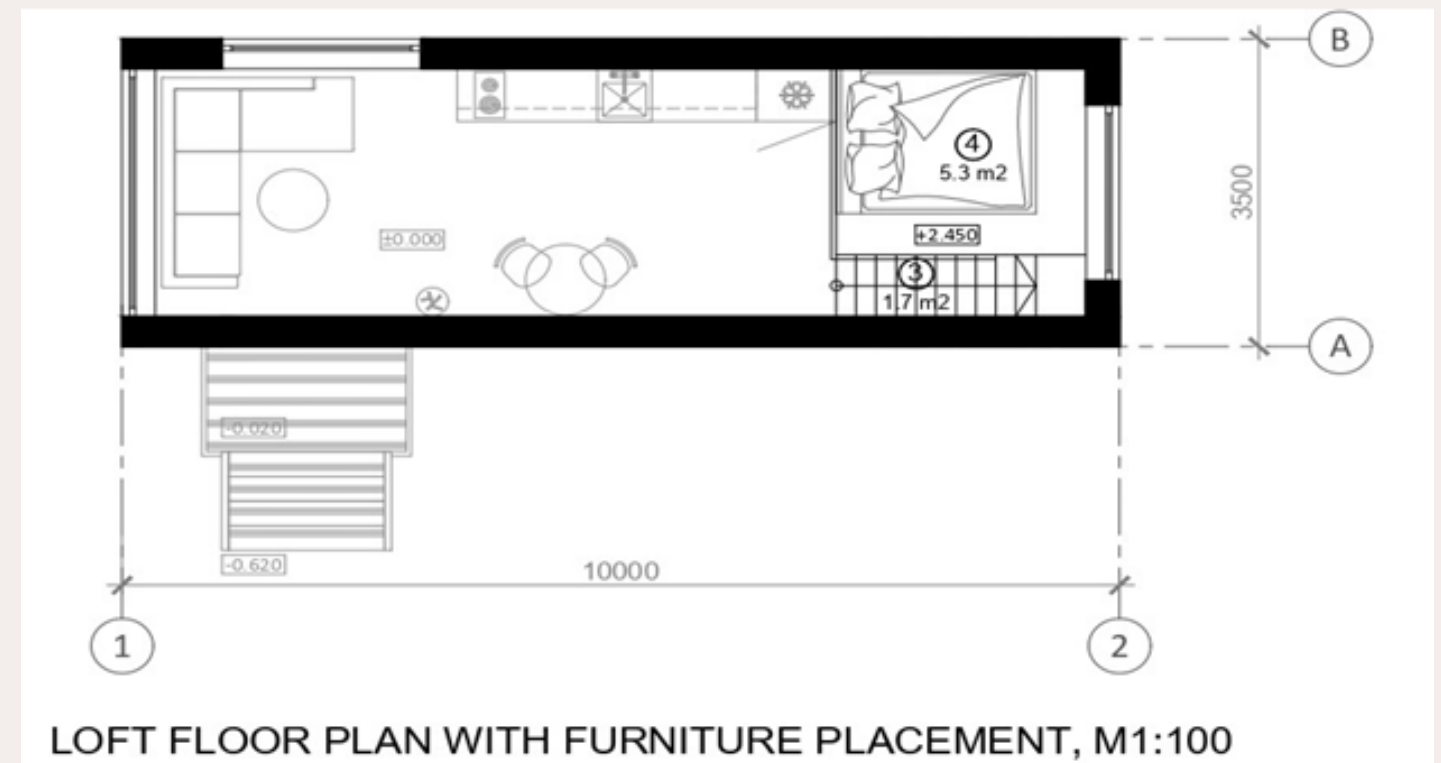
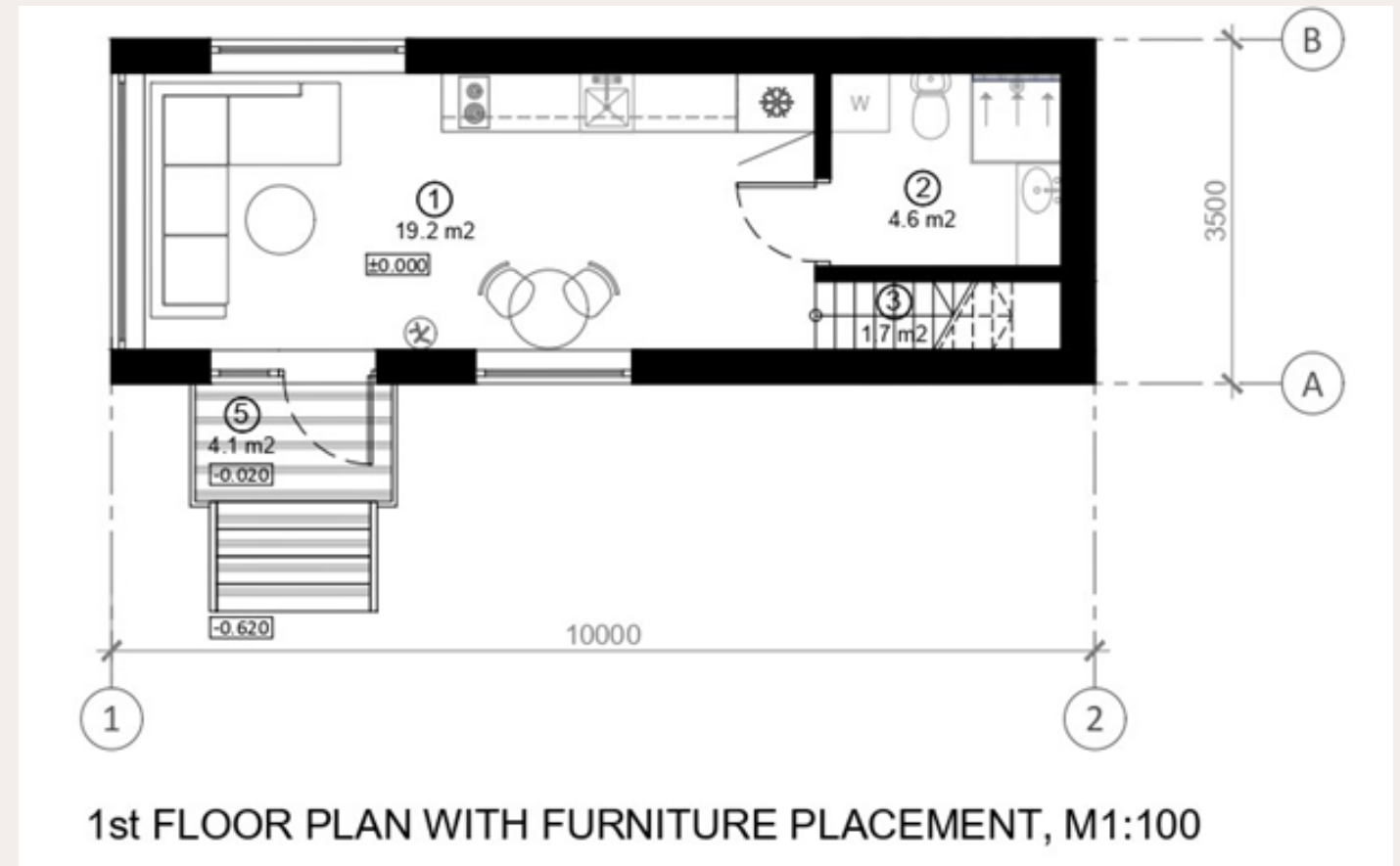
Heating: Electric heaters.

Kitchen: Ikea furniture without kitchen equipment. Sink and mixer.

Price: From 1300 Eur/m² + VAT

Tiny House BO-08

35m²



35m²

Tiny House BO-08

Roof outside: 250 mm insulation in the roof.

Roof inside: Painted plasterboard partition, or board cladding.

Walls outside: Insulation 250mm. Facade from dry, planed boards, painted with high-quality water-based facade paints.

Walls inside: Painted plasterboard partition, or board cladding.

Floor: insulation 250 mm, carcass protection against rodents.

Floor inside: Flooring plasterboard, laminate.

Windows: PVC windows and external doors with 3 glasses.

Electrical installation: Wired electrical wiring, complies with EU standard, switch cabinet with safety devices, built-in contacts and switches.

Plumbing installation: Sewerage, cold and hot water inlet in the bathroom and kitchen. Toilet bowl, shower cabin, sink, mixers. Water heating boiler 75l.

Heating: Electric heaters.

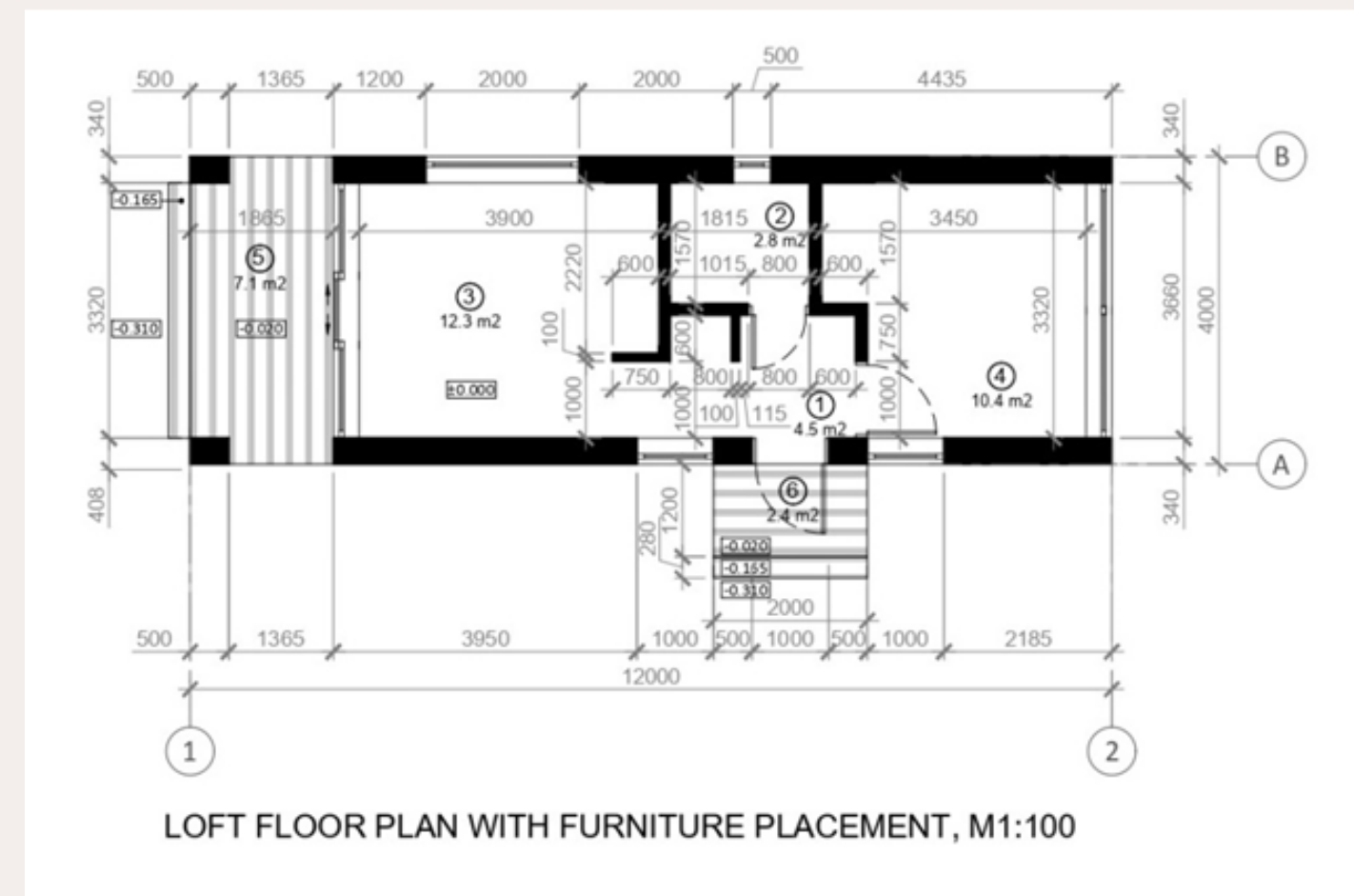
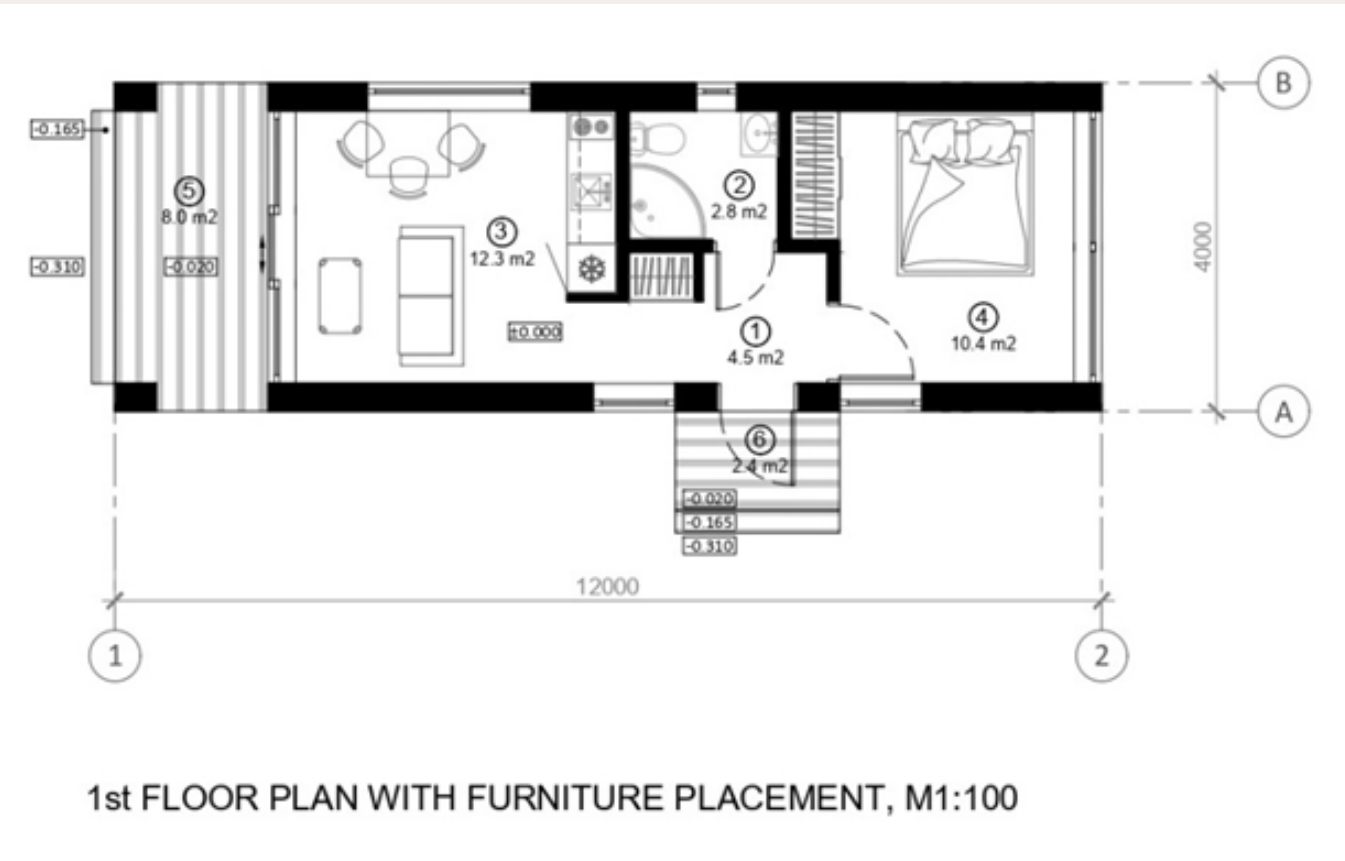
Kitchen: Ikea furniture without kitchen equipment. Sink and mixer.

Terrace: Pine terrace boards.

Price: From 1300 Eur/m² + VAT

Tiny House BO-09

40m²



40m²

Tiny House BO-09

Roof outside: 250 mm insulation in the roof. Rukki classic original metal roofing and drainage system

Roof inside: Painted plasterboard partition, or board cladding.

Walls outside: Insulation 250mm. Facade from dry, planed boards, painted with high-quality water-based facade paints.

Walls inside: Painted plasterboard partition, or board cladding.

Floor: insulation 250 mm, carcass protection against rodents.

Floor inside: Flooring plasterboard, laminate.

Windows: PVC windows and external doors with 3 glasses.

Electrical installation: Wired electrical wiring, complies with EU standard, switch cabinet with safety devices, built-in contacts and switches.

Plumbing installation: Sewerage, cold and hot water inlet in the bathroom and kitchen. Toilet bowl, shower cabin, sink, mixers.
Water heating boiler 75l.

Heating: Electric heaters.

Kitchen: Ikea furniture without kitchen equipment. Sink and mixer.

Terrace: Pine terrace boards.

Price: From 1300 Eur/m² + VAT

Tiny House BO-10

22,3m²

House dimension: 2,5mx7,2m

Roof outside: 150 mm insulation in the roof. Rukki classic original metal roofing and drainage system

Roof inside: Painted plasterboard partition, or board cladding.

Walls outside: Insulation 100mm. Facade from dry, planed boards, painted with high-quality water-based facade paints.
Walls inside: Painted plasterboard partition, or board cladding.

Floor: The house is built on the Vlemixx trailer model TH720
Floor inside: Flooring plasterboard, laminate.

Windows: PVC windows and external doors with 3 glasses.

Electrical installation: Wired electrical wiring, complies with EU standard, switch cabinet with safety devices, built-in contacts and switches.

Plumbing installation: Sewerage, cold and hot water inlet in the bathroom and kitchen. Toilet bowl, shower cabin, sink, mixers.
Water heating boiler.

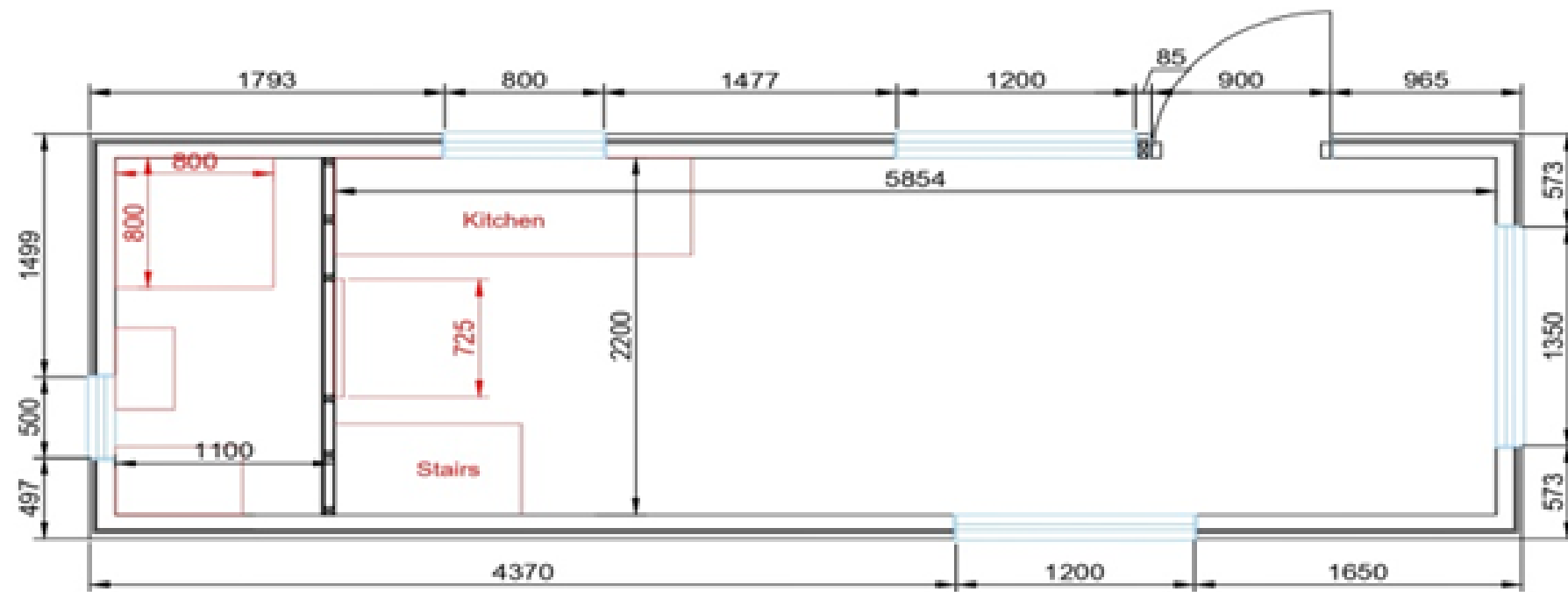
Heating: Electric heaters.

Kitchen: Ikea furniture without kitchen equipment. Sink and mixer.



Tiny House BO-11

18m²



18m²

Tiny House BO-11

House dimension: 2,5mx7,2m

Roof outside: 150 mm insulation in the roof. Rukki classic original metal roofing and drainage system

Roof inside: Painted plasterboard partition, or board cladding.

Walls outside: Insulation 100mm. Facade from dry, planed boards, painted with high-quality water-based facade paints.

Walls inside: Painted plasterboard partition, or board cladding.

Floor: The house is built on the Vlemixx trailer model TH720

Floor inside: Flooring plasterboard, laminate.

Windows: PVC windows and external doors with 3 glasses.

Electrical installation: Wired electrical wiring, complies with EU standard, switch cabinet with safety devices, built-in contacts and switches.

Plumbing installation: Sewerage, cold and hot water inlet in the bathroom and kitchen. Toilet bowl, shower cabin, sink, mixers.

Water heating boiler.

Heating: Electric heaters.

Kitchen: Ikea furniture without kitchen equipment. Sink and mixer.

Price: From 1300 Eur/m² + VAT

Tiny house WSS-01

30m²



Tiny house WSS-01

30m²



House suitable for living all year.

Frame construction: C24 wood, walls 15 cm, ceiling/floor – 20 cm.
KNAUF UNIFIT mineral wool.

Sealable bituminous roof covering.

High ceiling: 270CM inside.

Windows, doors: PVC, 6-chamber German GEALAN S8000 profile, frame width 74 mm, 2 panes

Exterior finish: Chipboard spruce, covered with TEKNA impregnant.
Color according to the catalog.

Electrical installation: Outdoor lighting, PHILLIPS, HEDGEHOG
Anthracite

Interior decoration: Double-layered oak parquet boards
Poplar Plywood/Birch Plywood/Wood Paneling/Painted Drywall
(Optional)

Networks, installation: Indoor lights, recessed, LED panel PHILIPS
MESON, 24 W

Switches, sockets; ABB future linear, white

Internal sewage networks

Domestic water supply networks

Hot water heater ARISTON ANDRIS RS, instant heating, 30l capacity

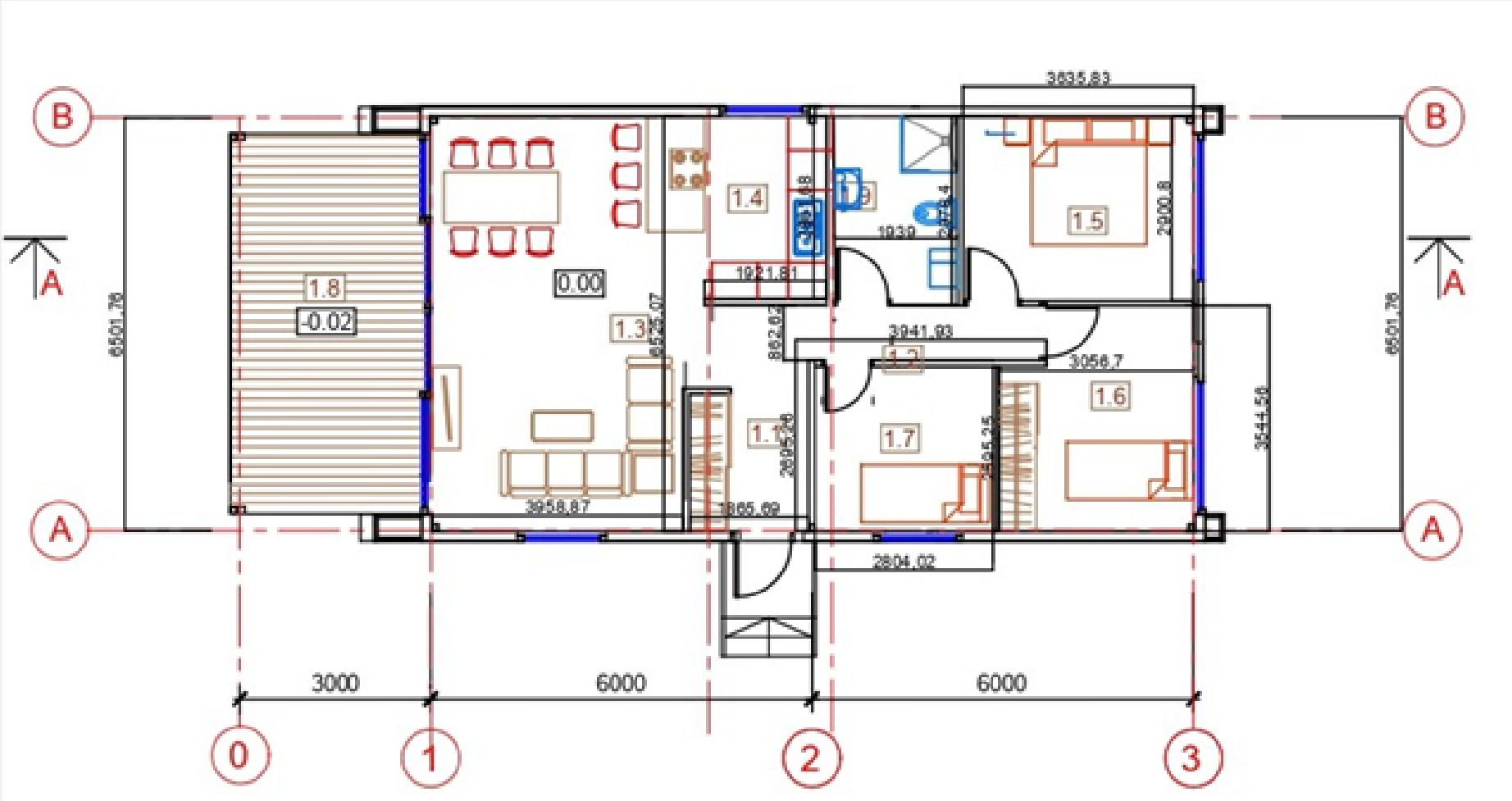
Air – Air Heating/Cooling System, Samsung SPLIT Wind Free Arise

Bathroom equipment.

Price: 1900 Eur + VAT /m²

Tiny House ME-01

72m²



72m²

Tiny House ME-01

Roof outside: Roof of sandwich panels with a thickness of 120 mm (coefficient of thermal conductivity U-0, 17W / m²K).
Roof inside: Plasterboard partition.

Walls outside: Metal frame S355, painted woodgrain, walls of sandwich panels with a thickness of 120 mm (coefficient of thermal conductivity U-0, 17W / m²K).
Walls inside: Double plasterboard partitions.

Floor: insulation 250 mm, carcass protection against rodents.
Floor inside: Flooring plasterboard.

Windows: PVC windows and external doors with 2 glasses.

Electrical installation: Wired electrical wiring, complies with EU standard, switch cabinet with safety devices, built-in contacts and switches for branch boxes

Plumbing installation: Sewerage and cold water inlet in the bathroom and kitchen

Terrace: 8-chamber terrace of special rubber material, terrace roof of roofing sheet 0.5 mm. Primed and painted, partitions of sandwich panels with a thickness of 80 mm.

Price: From 1300 Eur/m² + VAT

Tiny house- MW-2

House sizes:

- 12m² (3,0m x 4,0m)
- 15m² (3,0m x 5,0m)
- 18m² (3,0m x 6,0m)
- 24m² (4,0m x 6,0m)

Roof outside: Bituminous tiles: color black, brown, green, red. Uninsulated. Rain system.

Roof inside: The roof crown is covered and the columns are made of glued wood beam 120 X 120 mm; Spruce rafters 45 X 70 mm / A class, spruce wood roofs 20 X 120 mm / A class, the roof wood wood is coated with brown Remmers Polisander (Germany).

Walls outside: Planed spruce wood frame 43 X 43 mm; Insulation 50 mm thick stone wool "PAROC", diffusion film spruce wood siding 20 X 120 mm / A class. The facade wood is coated with brown Remmers Polisander (Germany) impregnate, total wall thickness 80 mm.

Walls inside: spruce wood siding 20 X 120 mm / A class.

Floor: insulated with polystyrene 50 mm, diffused film coated, double floor frame 45 X 70 mm.

Floor inside: punched baseboards 28mm.

Windows: aluminum profile 4 mm tempered glass system, 2 glasses.

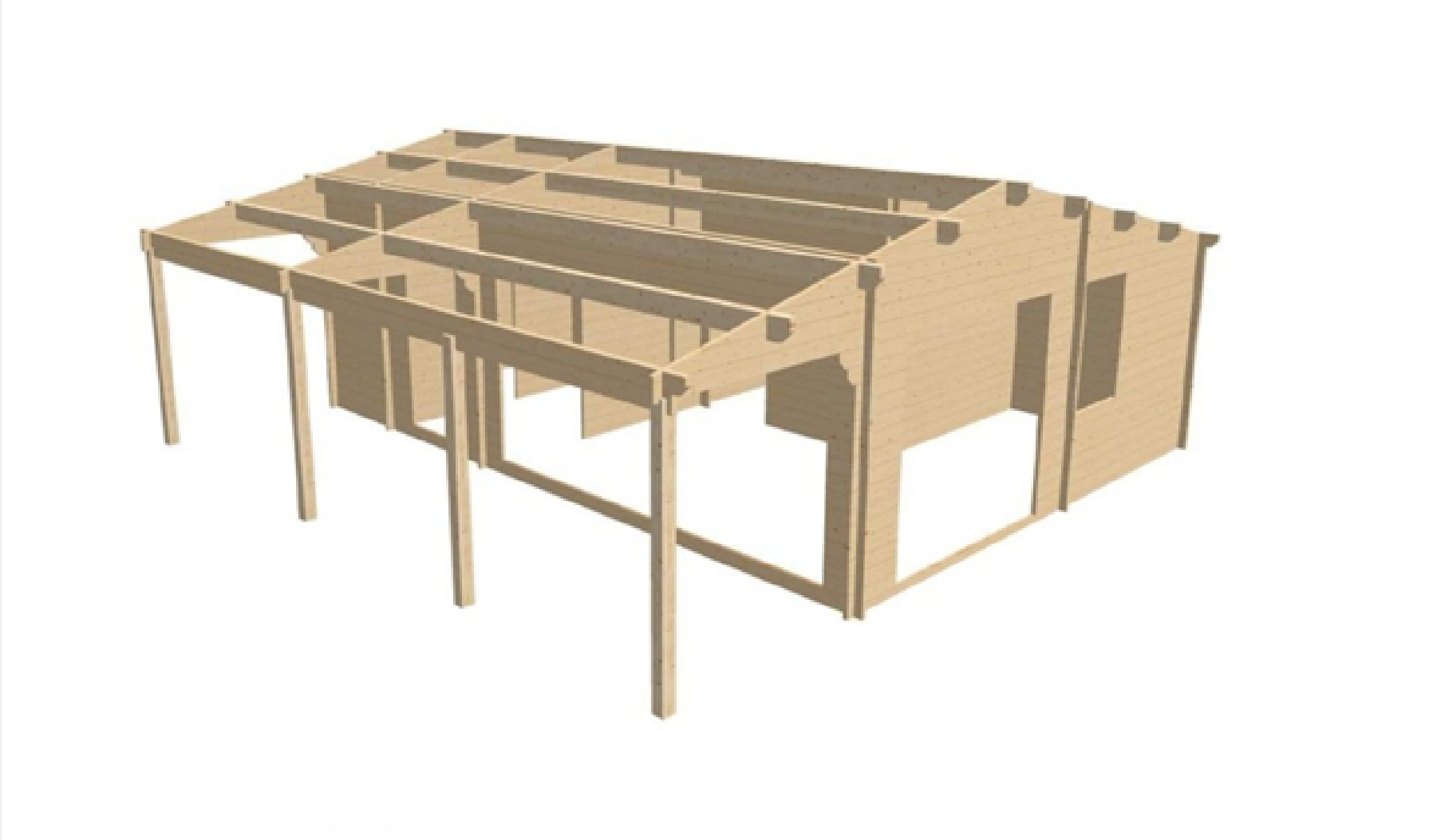
Terrace: Impregnated pine terrace boards.

Price: From 1300 Eur/m² + VAT



Tiny House TC-01

60m²



60m²

Tiny House TC-01

This house kit includes wooden frame construction with wall thickness 44mm, as well as wooden windows with two glasses and wooden doors.

Dimensions (width x length): 8000 x 8000 mm

Wall thickness: 44 mm

Wall height: 2295 mm

Roof pitch: (degree + Total cottage altitude): 12°, 3191 mm

Roof thickness: 19 mm

Floor thickness: 19 mm

Rafters dimensions and quantity: 70 x 190 mm, 7 units

Front extension of the canopy: 200 mm

The area of a roof: 4 m²

The length of the terrace: —Outside walls area: 78 m²

Inside walls area: 86 m²

Windows and doors quality: Superior (4/10/4mm)

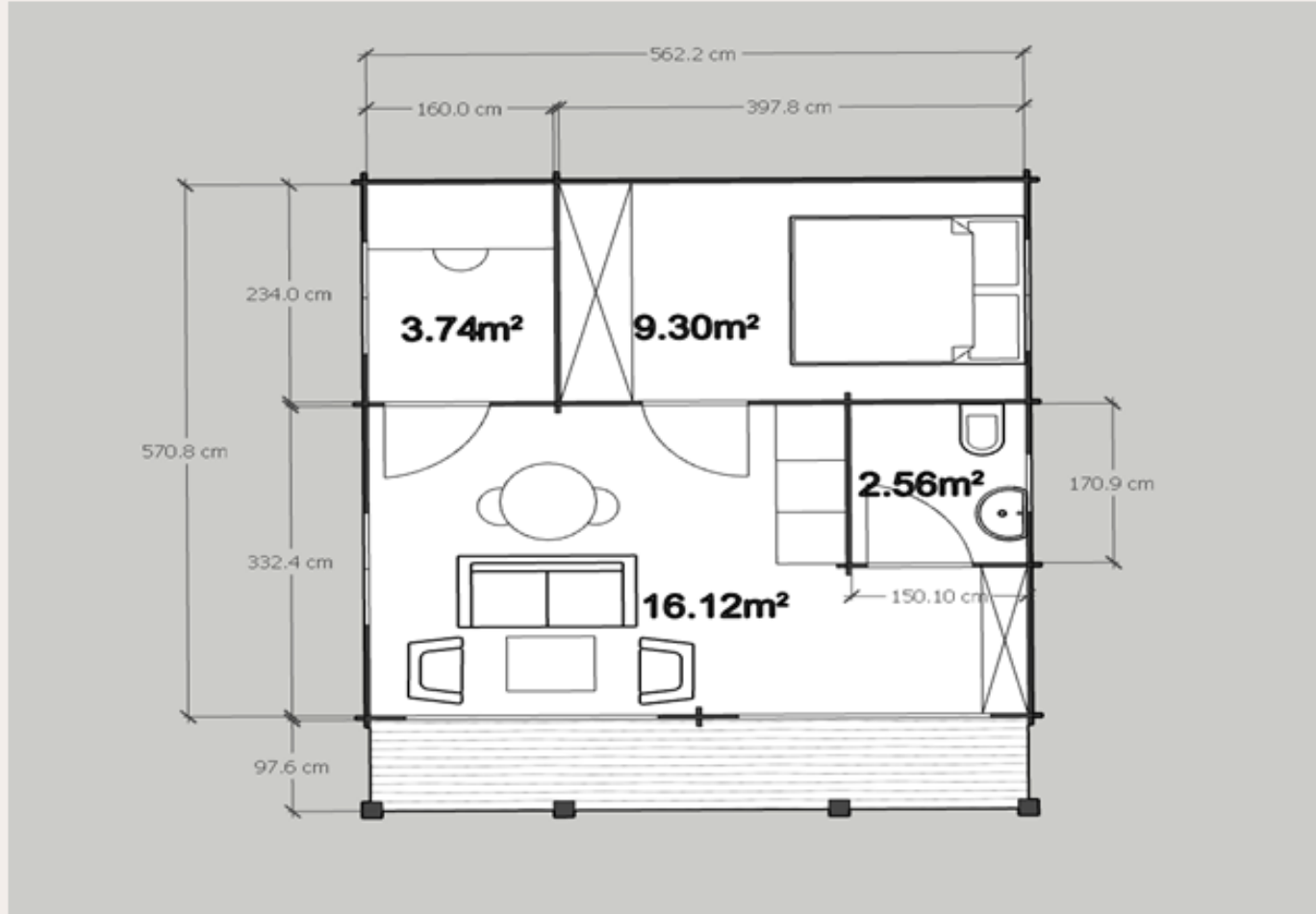
This is an excellent solution for those who prefer to build the house by themselves.

Our company can deliver fully finished house, or partly finished house according to your needs. The final price will depend on client's special needs and house specification.

Price: From 1300 Eur/m² + VAT

Tiny House TC-02

37m²



37m²

Tiny House TC-02

This house kit include wooden frame construction with wall thickness 44mm, as well as wooden windows with two glasses and wooden doors:

Dimensions (width x length): 5870 x 7000 mm

Wall thickness: 44 mm

Wall height: 2295 mm

Roof pitch (degree + Total cottage altitude): 12°, 2994 mm

Roof thickness: 19 mm

Floor thickness: 19 mm

Rafters dimensions and quantity: 70 x 140 mm, 5 units

Front extension of the canopy: 200 mm

The area of a roof: 2 m²

The length of the terrace —

Outside walls area: 73 m²

Inside walls area: 41 m²

Windows and doors quality: Superior (4/10/4mm)

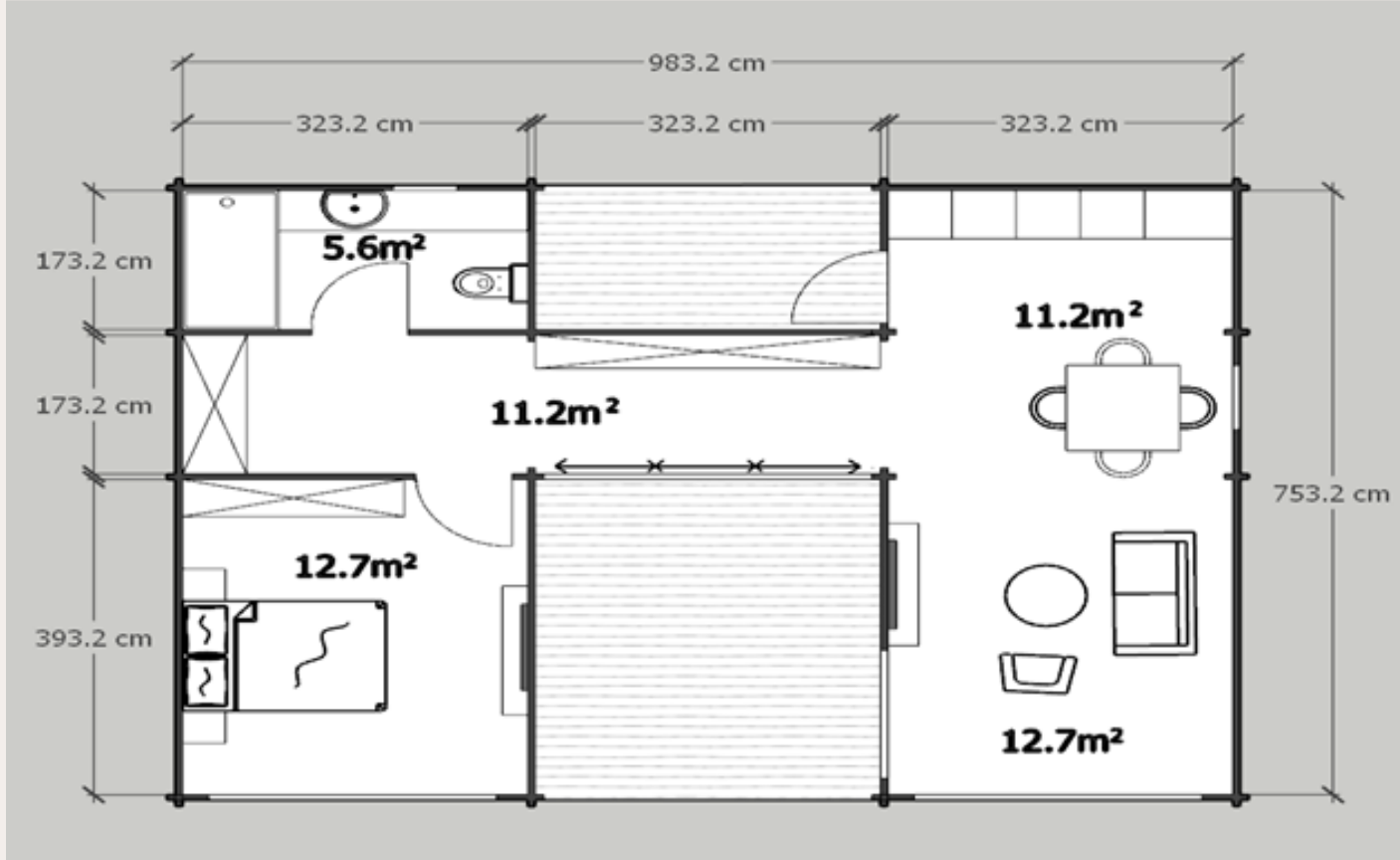
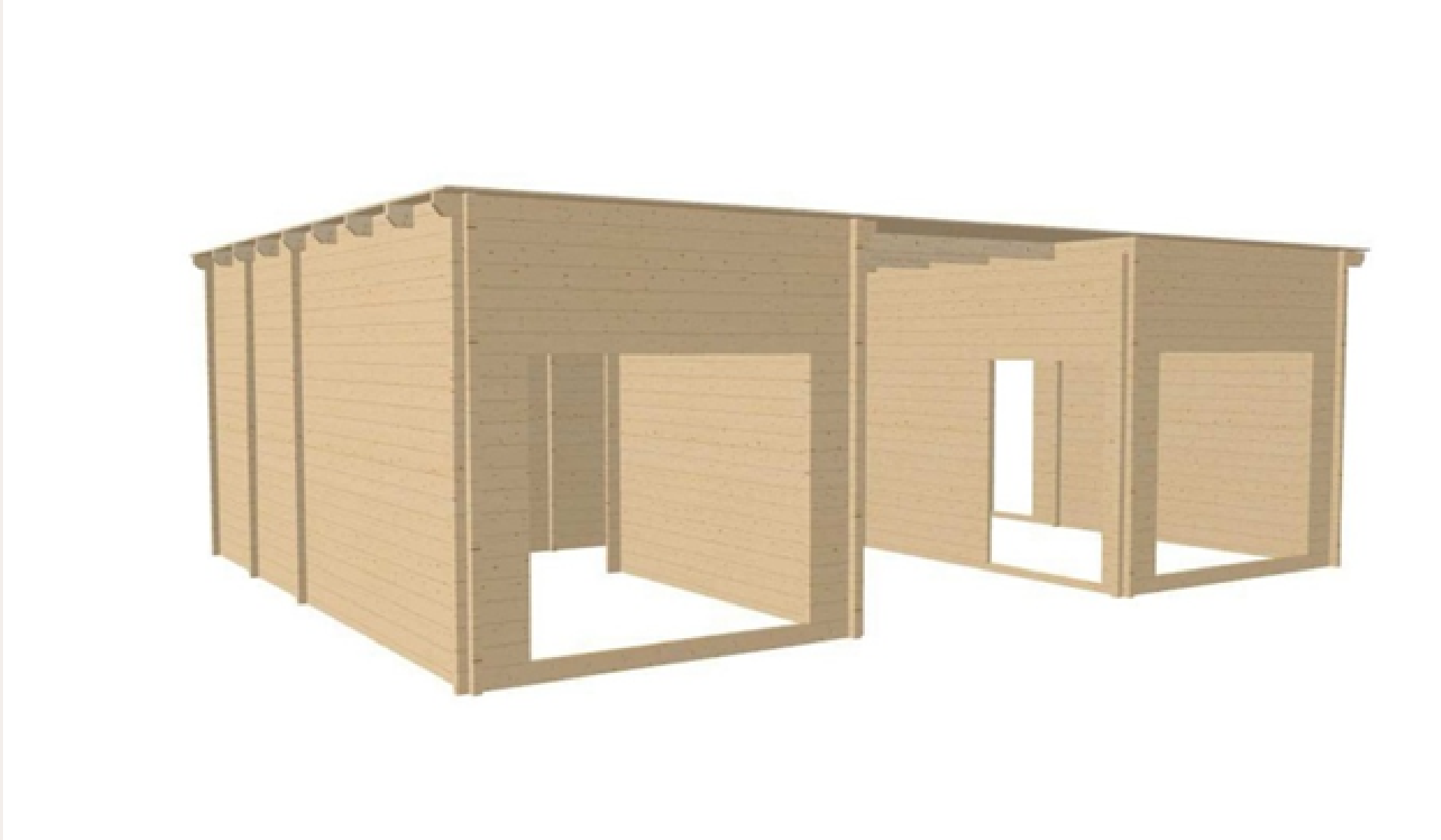
This is an excellent solution for those who prefer to build the house by themselves.

Our company can deliver fully finished house, or partly finished house according to your needs. The final price will depend on client's special needs and house specification.

Price: From 1300 Eur/m² + VAT

Tiny House TC-03

74m²



74m²

Tiny House TC-03

This house kit include wooden frame construction with wall thickness 68mm, as well as wooden windows with two glasses and wooden doors

Dimensions (width x length): 7828 x 10128 mm

Wall thickness: 68 mm

Wall height: 2970 mm

Roof pitch (degree + Total cottage altitude): 0°, 3040 mm

Roof thickness: 19 mm

Floor thickness: 19 mm

Rafters dimensions and quantity: 70 x 140 mm, 9 units

Front extension of the canopy: 200 mm

The area of a roof: 83.6 m²

The length of the terrace —

Outside walls area: 85.67 m²

Inside walls area: 205.55 m²

Windows and doors quality: Premium (4/16/4mm)

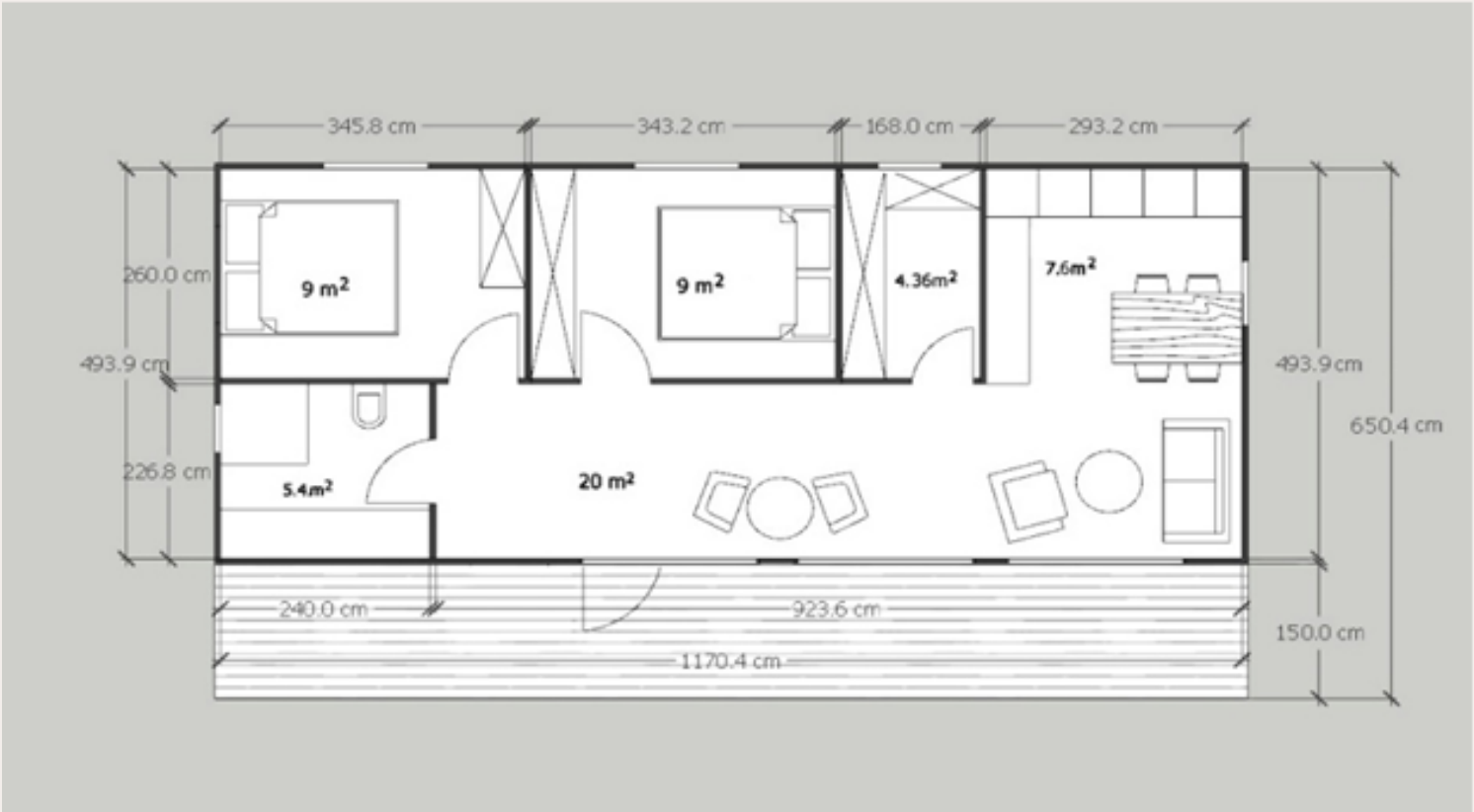
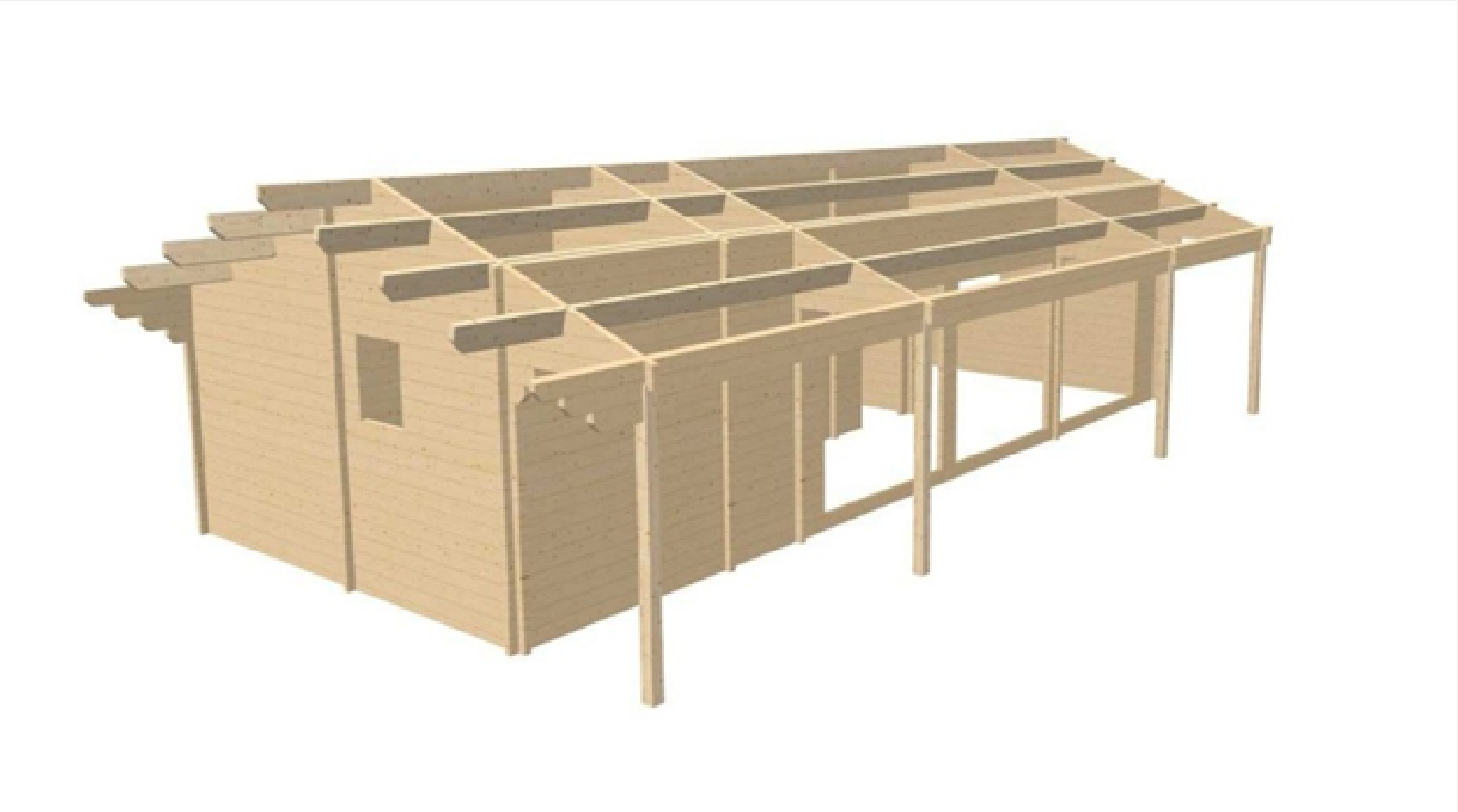
This is an excellent solution for those who prefer to build the house by themselves.

Our company can deliver fully finished house, or partly finished house according to your needs. The final price will depend on client's special needs and house specification.

Price: From 1300 Eur/m² + VAT

Tiny House TC-04

74m²



74m²

Tiny House TC-04

This house kit include wooden frame construction with wall thickness 68mm, as well as wooden windows with two glasses and wooden doors:

Dimensions (width x length): 6800 x 12000 mm

Wall thickness: 68 mm

Wall height: 2295 mm

Roof pitch (degree + Total cottage altitude): 17°, 3360 mm

Roof thickness: 19 mm

Floor thickness: 19 mm

Rafters dimensions and quantity: 70 x 190 mm, 7 units

Front extension of the canopy: 1000 mm

The area of a roof: 99.5 m²

The length of the terrace —

Outside walls area: 72.71 m²

Inside walls area: 210.84 m²

Windows and doors quality: Superior (4/10/4mm)

This is an excellent solution for those who prefer to build the house by themselves.

Our company can deliver fully finished house, or partly finished house according to your needs. The final price will depend on client's special needs and house specification.

Price: From 1300 Eur/m² + VAT

Tiny house TC -05

22m²

Dimension: 4x6m
Height: 2,83m
Length: 5,97m
Width: 4,06m
Terrace area: 9,80m²

Wall thickness: 42mm
Floor thickness: 19mm
Roof thickness: 19mm

House kit includes:
42mm logs that form the outer walls/roof
Additional layer of roof boards
Basement beams 75*145
Internal walls
Floor boards (19 mm)
Base bearers (50*70 mm)
Wooden doors and windows (4/10/4mm glazing)
Wooden terrace

Price: From 1300 Eur/m² + VAT



Tiny house TC -06

22m²

Dimension: 4x6m

Height: 2,53m

Length: 5,97m

Width: 4,08m

Terrace area: 9,80m²

Wall thickness: 42mm

Floor thickness: 19mm

Roof thickness: 19mm

House kit includes:

42mm logs that form the outer walls/roof

Additional layer of roof boards

Basement beams 75*145

Internal walls

Floor boards (19 mm)

Base bearers (50×70 mm)

Wooden doors and windows (4/10/4mm glazing)

Wooden terrace

Price: From 1300 Eur/m² + VAT



96m²

Tiny House BO-12



Tiny House BO-12

96m²

Roof outside: 250 mm insulation in the roof. Rukki classic original metal roofing and drainage system

Roof inside: Painted plasterboard partition, or board cladding.

Walls outside: Insulation 250mm. Facade from dry, planed boards, painted with high-quality water-based facade paints.

Walls inside: Painted plasterboard partition, or board cladding.

Floor: insulation 250 mm, carcass protection against rodents.

Floor inside: Flooring plasterboard, laminate.

Windows: PVC windows and external doors with 3 glasses.

Electrical installation: Wired electrical wiring, complies with EU standard, switch cabinet with safety devices, built-in contacts and switches.

Plumbing installation: Sewerage, cold and hot water inlet in the bathroom and kitchen. Toilet bowl, shower cabin, sink, mixers.

Water heating boiler 75l.

Heating: Electric heaters.

Price: From 1300 Eur/m² + VAT



Tiny House BO-13

24.5m²

Roof outside: 250 mm insulation in the roof. Rukki classic original metal roofing and drainage system
Roof inside: Painted plasterboard partition, or board cladding.

Walls outside: Insulation 250mm. Facade from dry, planed boards, painted with high-quality water-based facade paints.
Walls inside: Painted plasterboard partition, or board cladding.

Floor: insulation 250 mm, carcass protection against rodents.
Floor inside: Flooring plasterboard, laminate.

Windows: PVC windows and external doors with 3 glasses.
Electrical installation: Wired electrical wiring, complies with EU standard, switch cabinet with safety devices, built-in contacts and switches.
Plumbing installation: Sewerage, cold and hot water inlet in the bathroom and kitchen. Toilet bowl, shower cabin, sink, mixers.
Water heating boiler 75l.
Heating: Electric heaters.

Price: From 1300 Eur/m² + VAT



24.5m²

Tiny House BO-13



Tiny House BO-14

54m²

Roof outside: 250 mm insulation in the roof. Rukki classic original metal roofing and drainage system
Roof inside: Painted plasterboard partition, or board cladding.

Walls outside: Insulation 250mm. Facade from dry, planed boards, painted with high-quality water-based facade paints.
Walls inside: Painted plasterboard partition, or board cladding.

Floor: insulation 250 mm, carcass protection against rodents.
Floor inside: Flooring plasterboard, laminate.
Windows: PVC windows and external doors with 3 glasses.

Electrical installation: Wired electrical wiring, complies with EU standard, switch cabinet with safety devices, built-in contacts and switches.

Plumbing installation: Sewerage, cold and hot water inlet in the bathroom and kitchen. Toilet bowl, shower cabin, sink, mixers.
Water heating boiler 75l.
Heating: Electric heaters.

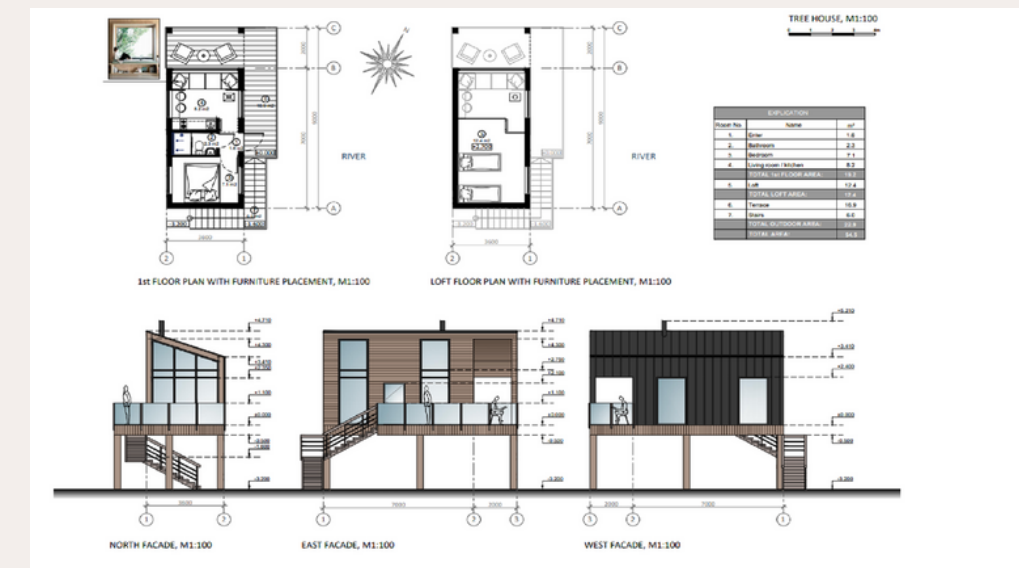
Price: From 1300 Eur/m² + VAT



54m²



Tiny House BO-14



Tiny House BO-15

130m²

Roof outside: 250 mm insulation in the roof. Rukki classic original metal roofing and drainage system
Roof inside: Painted plasterboard partition, or board cladding.

Walls outside: Insulation 250mm. Facade from dry, planed boards, painted with high-quality water-based facade paints.
Walls inside: Painted plasterboard partition, or board cladding.

Floor: insulation 250 mm, carcass protection against rodents.
Floor inside: Flooring plasterboard, laminate.

Windows: PVC windows and external doors with 3 glasses.
Electrical installation: Wired electrical wiring, complies with EU standard, switch cabinet with safety devices, built-in contacts and switches.
Plumbing installation: Sewerage, cold and hot water inlet in the bathroom and kitchen. Toilet bowl, shower cabin, sink, mixers.
Water heating boiler 75l.
Heating: Electric heaters.

Price: From 1300 Eur/m² + VAT



130m²

Tiny House BO-15



Tiny House BO-16

87m²

Roof outside: 250 mm insulation in the roof. Rukki classic original metal roofing and drainage system
Roof inside: Painted plasterboard partition, or board cladding.

Walls outside: Insulation 250mm. Facade from dry, planed boards, painted with high-quality water-based facade paints.
Walls inside: Painted plasterboard partition, or board cladding.

Floor: insulation 250 mm, carcass protection against rodents.
Floor inside: Flooring plasterboard, laminate.

Windows: PVC windows and external doors with 3 glasses.
Electrical installation: Wired electrical wiring, complies with EU standard, switch cabinet with safety devices, built-in contacts and switches.
Plumbing installation: Sewerage, cold and hot water inlet in the bathroom and kitchen. Toilet bowl, shower cabin, sink, mixers.
Water heating boiler 75l.
Heating: Electric heaters.

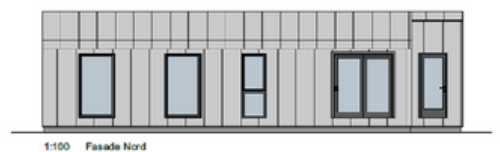
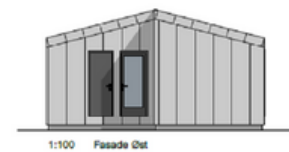
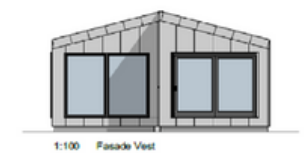
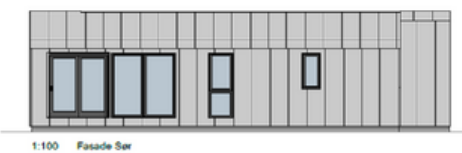
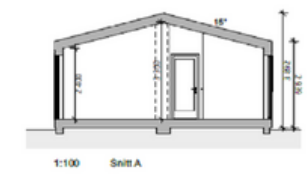
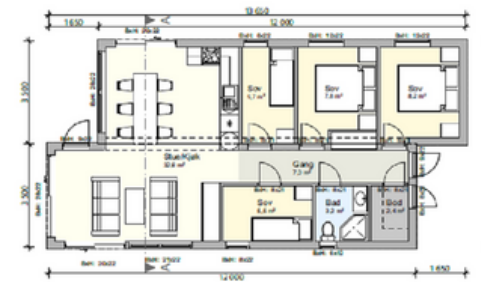
Price: From 1300 Eur/m² + VAT



87m²



Tiny House BO-16



Tiny House BO-17

24m²

Roof outside: 250 mm insulation in the roof. Rukki classic original metal roofing and drainage system
Roof inside: Painted plasterboard partition, or board cladding.

Walls outside: Insulation 250mm. Facade from dry, planed boards, painted with high-quality water-based facade paints.
Walls inside: Painted plasterboard partition, or board cladding.

Floor: insulation 250 mm, carcass protection against rodents.
Floor inside: Flooring plasterboard, laminate.

Windows: PVC windows and external doors with 3 glasses.
Electrical installation: Wired electrical wiring, complies with EU standard, switch cabinet with safety devices, built-in contacts and switches.
Plumbing installation: Sewerage, cold and hot water inlet in the bathroom and kitchen. Toilet bowl, shower cabin, sink, mixers.
Water heating boiler 75l.
Heating: Electric heaters.

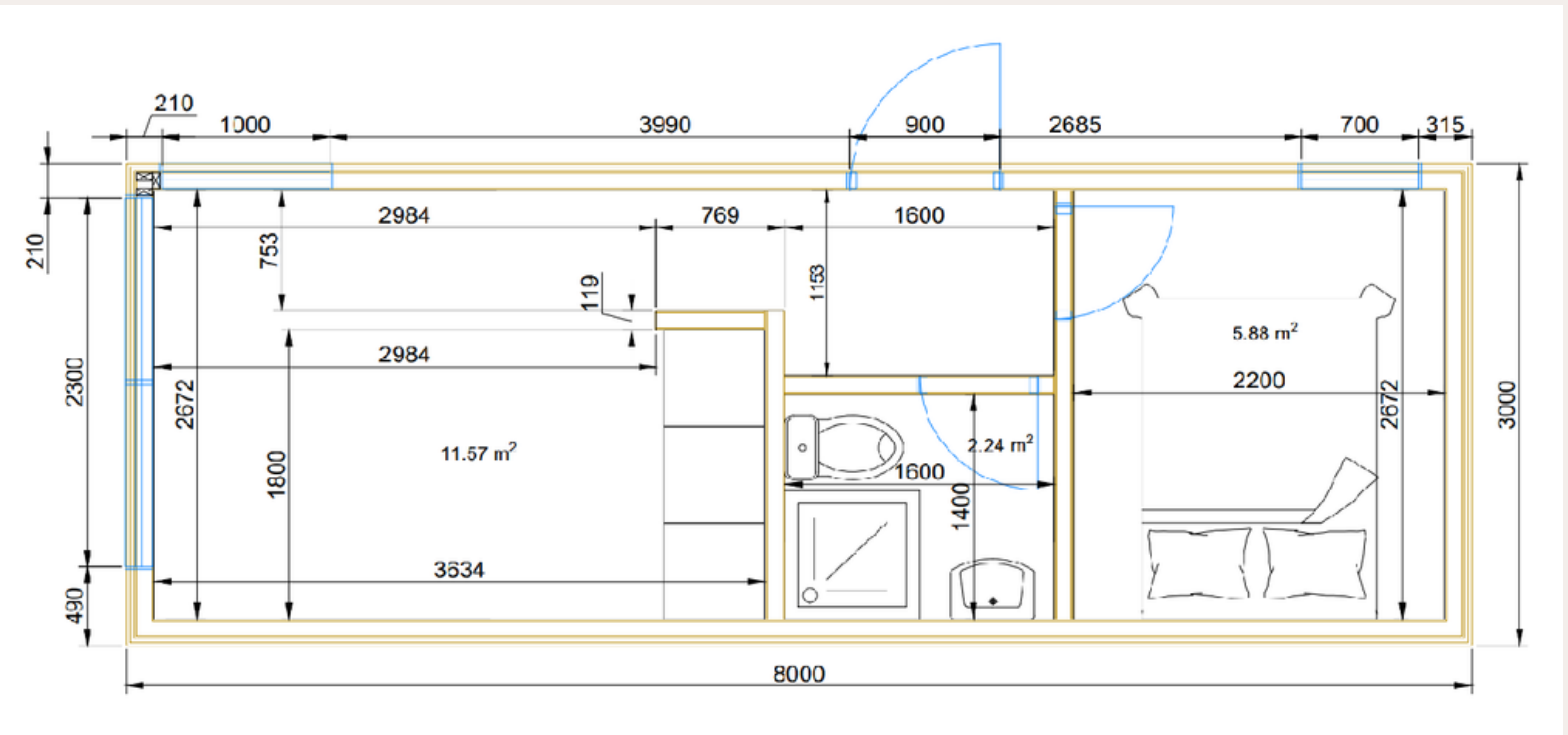
Price: From 1300 Eur/m² + VAT



24m²



Tiny House BO-17



Tiny House BO-18

60m²

Roof outside: 250 mm insulation in the roof. Rukki classic original metal roofing and drainage system

Roof inside: Painted plasterboard partition, or board cladding.

Walls outside: Insulation 250mm. Facade from dry, planed boards, painted with high-quality water-based facade paints.

Walls inside: Painted plasterboard partition, or board cladding.

Floor: insulation 250 mm, carcass protection against rodents.

Floor inside: Flooring plasterboard, laminate.

Windows: PVC windows and external doors with 3 glasses.

Electrical installation: Wired electrical wiring, complies with EU standard, switch cabinet with safety devices, built-in contacts and switches.

Plumbing installation: Sewerage, cold and hot water inlet in the bathroom and kitchen. Toilet bowl, shower cabin, sink, mixers.

Water heating boiler 75l.

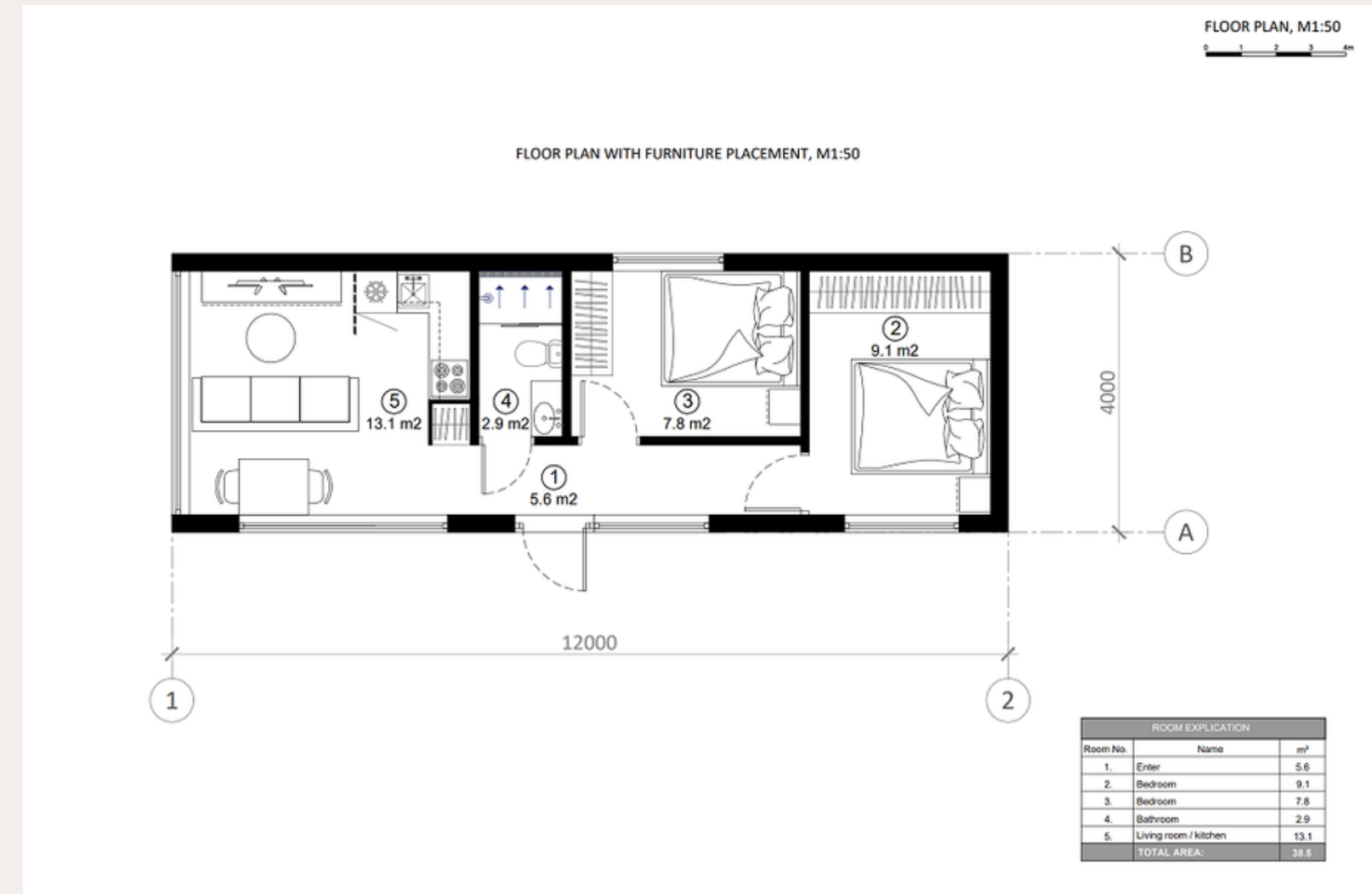
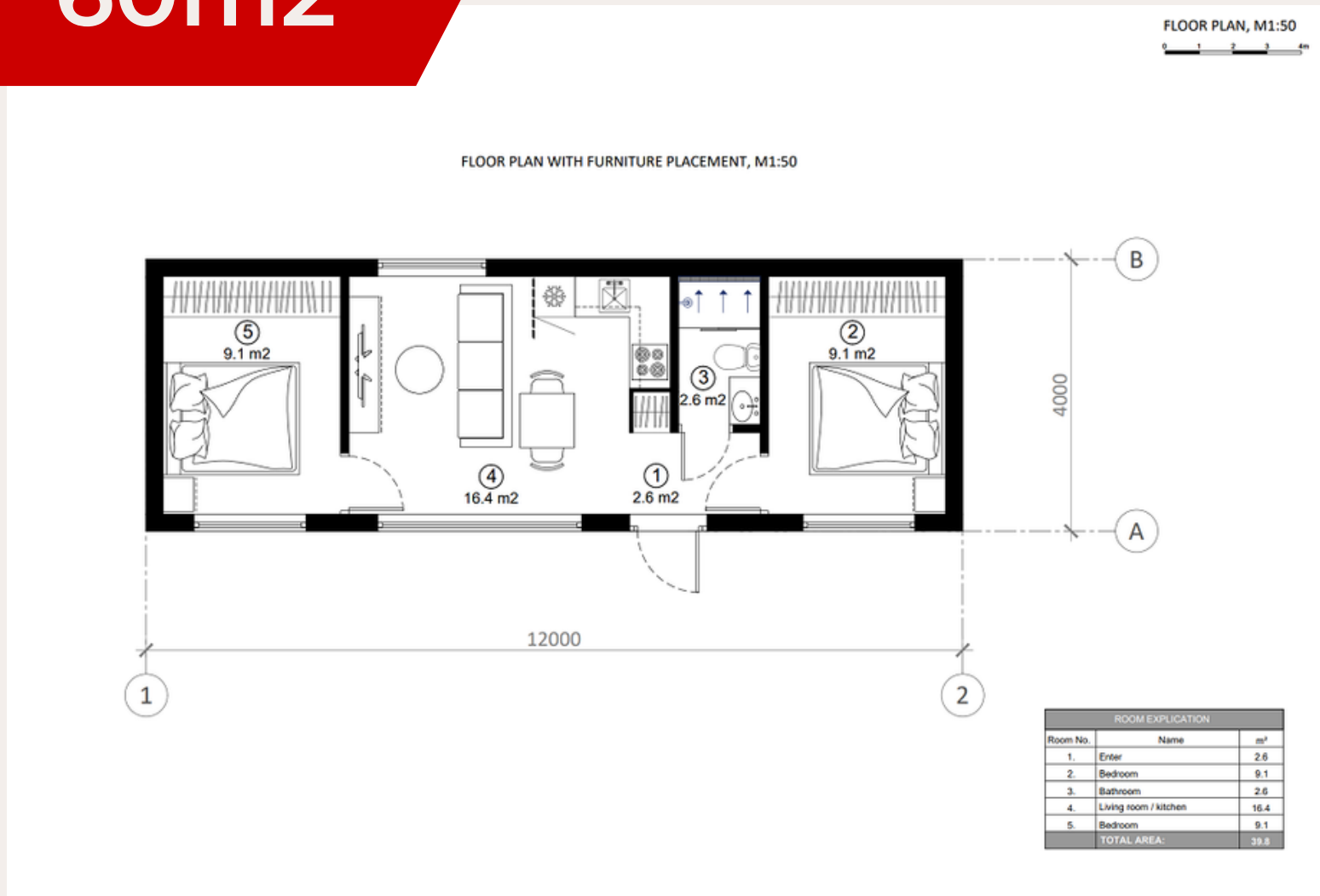
Heating: Electric heaters.

Price: From 1300 Eur/m² + VAT



Tiny House BO-17

60m²



Tiny House BO-20

48m²

Roof outside: 250 mm insulation in the roof. Rukki classic original metal roofing and drainage system

Roof inside: Painted plasterboard partition, or board cladding.

Walls outside: Insulation 250mm. Facade from dry, planed boards, painted with high-quality water-based facade paints.

Walls inside: Painted plasterboard partition, or board cladding.

Floor: insulation 250 mm, carcass protection against rodents.

Floor inside: Flooring plasterboard, laminate.

Windows: PVC windows and external doors with 3 glasses.

Electrical installation: Wired electrical wiring, complies with EU standard, switch cabinet with safety devices, built-in contacts and switches.

Plumbing installation: Sewerage, cold and hot water inlet in the bathroom and kitchen. Toilet bowl, shower cabin, sink, mixers. Water heating boiler 75l.

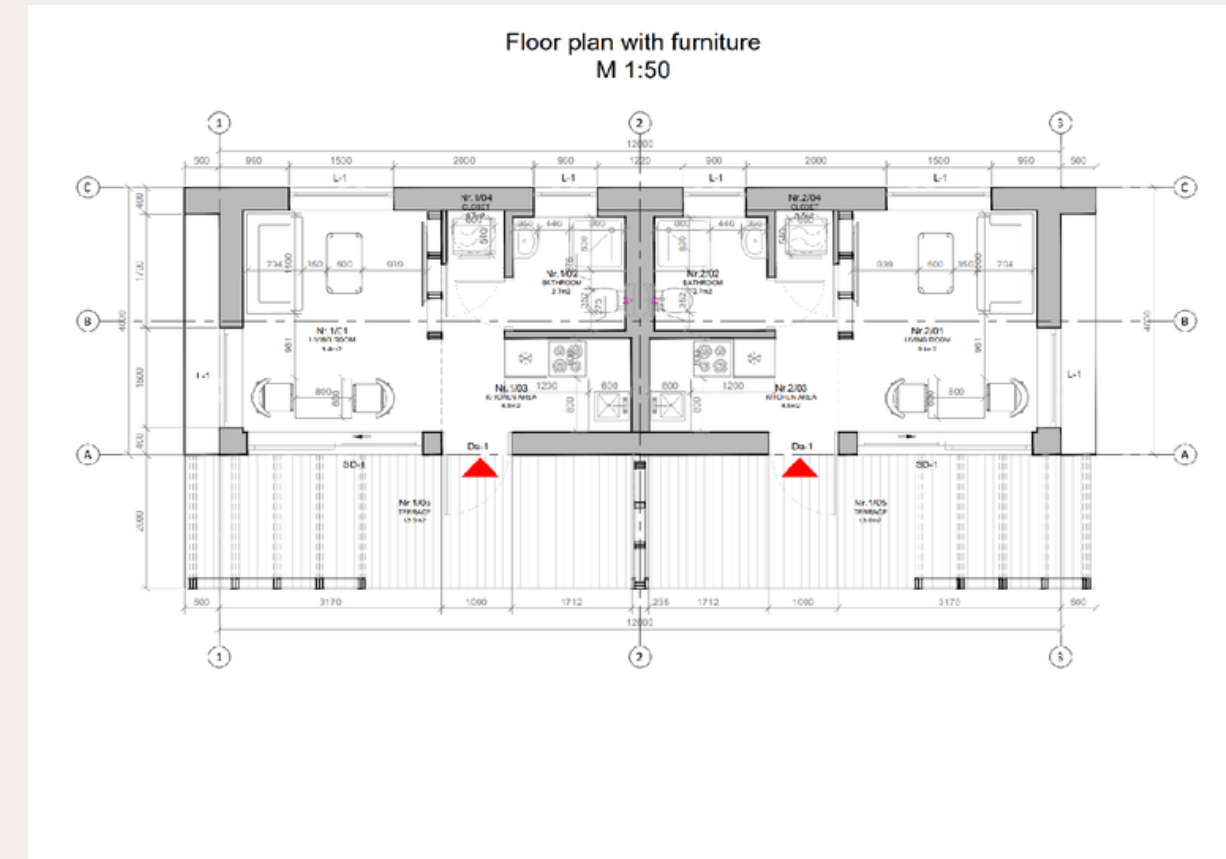
Heating: Electric heaters.

Price: From 1300 Eur/m² + VAT



48m²

Tiny House BO-20



Tiny House BO-21

48m²

Roof outside: 250 mm insulation in the roof. Rukki classic original metal roofing and drainage system

Roof inside: Painted plasterboard partition, or board cladding.

Walls outside: Insulation 250mm. Facade from dry, planed boards, painted with high-quality water-based facade paints.

Walls inside: Painted plasterboard partition, or board cladding.

Floor: insulation 250 mm, carcass protection against rodents.

Floor inside: Flooring plasterboard, laminate.

Windows: PVC windows and external doors with 3 glasses.

Electrical installation: Wired electrical wiring, complies with EU standard, switch cabinet with safety devices, built-in contacts and switches.

Plumbing installation: Sewerage, cold and hot water inlet in the bathroom and kitchen. Toilet bowl, shower cabin, sink, mixers.

Water heating boiler 75l.

Heating: Electric heaters

Price: From 1300 Eur/m² + VAT



Tiny House BO-22

15m²

Roof outside: 250 mm insulation in the roof. Rukki classic original metal roofing and drainage system

Roof inside: Painted plasterboard partition, or board cladding.

Walls outside: Insulation 250mm. Facade from dry, planed boards, painted with high-quality water-based facade paints.

Walls inside: Painted plasterboard partition, or board cladding.

Floor: insulation 250 mm, carcass protection against rodents.

Floor inside: Flooring plasterboard, laminate.

Windows: PVC windows and external doors with 3 glasses.

Electrical installation: Wired electrical wiring, complies with EU standard, switch cabinet with safety devices, built-in contacts and switches.

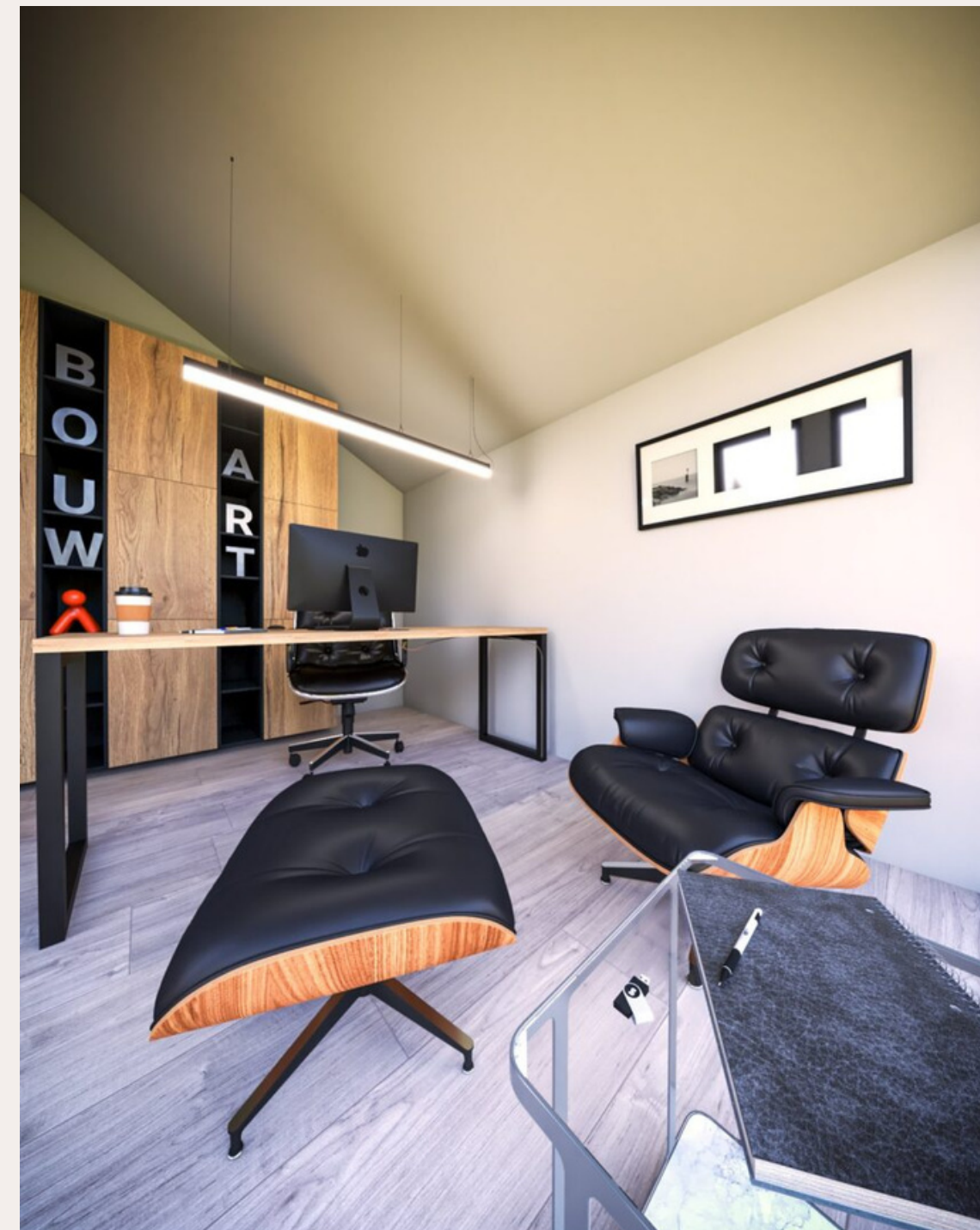
Heating: Electric heaters.

Price: From 1300 Eur/m² + VAT



15m²

Tiny House BO-22



Tiny House BO-19

90m²

Roof outside: 250 mm insulation in the roof. Rukki classic original metal roofing and drainage system

Roof inside: Painted plasterboard partition, or board cladding.

Walls outside: Insulation 250mm. Facade from dry, planed boards, painted with high-quality water-based facade paints.

Walls inside: Painted plasterboard partition, or board cladding.

Floor: insulation 250 mm, carcass protection against rodents.

Floor inside: Flooring plasterboard, laminate.

Windows: PVC windows and external doors with 3 glasses.

Electrical installation: Wired electrical wiring, complies with EU standard, switch cabinet with safety devices, built-in contacts and switches.

Plumbing installation: Sewerage, cold and hot water inlet in the bathroom and kitchen. Toilet bowl, shower cabin, sink, mixers.

Water heating boiler 75l.

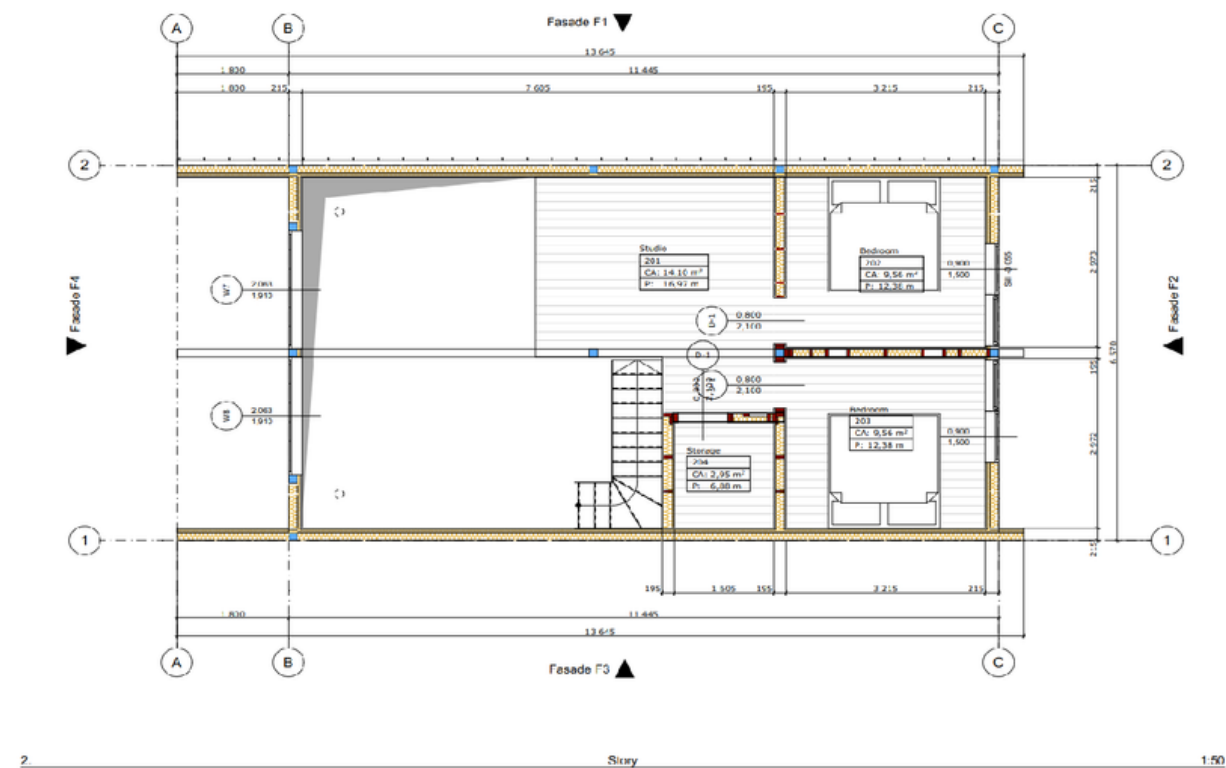
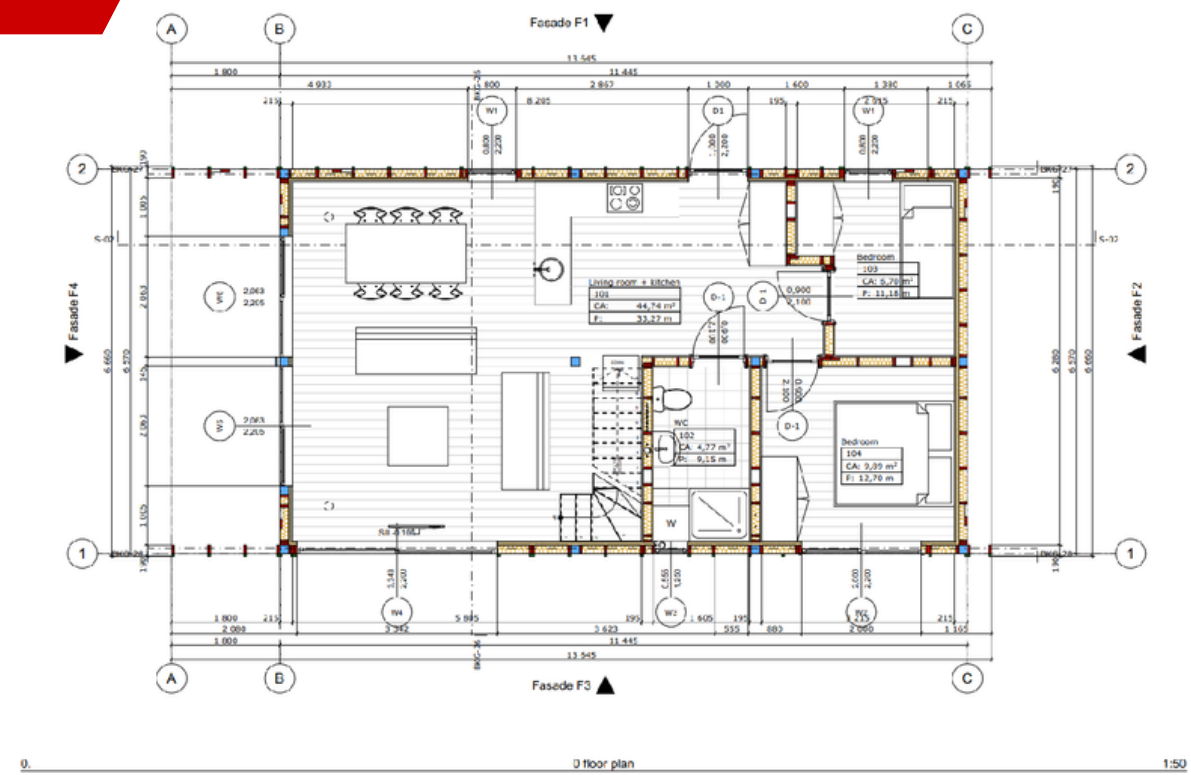
Heating: Electric heaters.

Price: From 1300 Eur/m² + VAT



Tiny House BO-19

90m²



Tiny House HY-01

56m²

Equipment: Fully equipped. Our houses are manufactured with full decoration. The price includes: complete exterior and interior decoration (exterior, interior colors and materials are coordinated with the customer before placing the order. The entire sanitary unit is coordinated (boiler, WC, shower, cabinet with sink, all plumbing), full electricity of the house (lamps, sockets, switches).

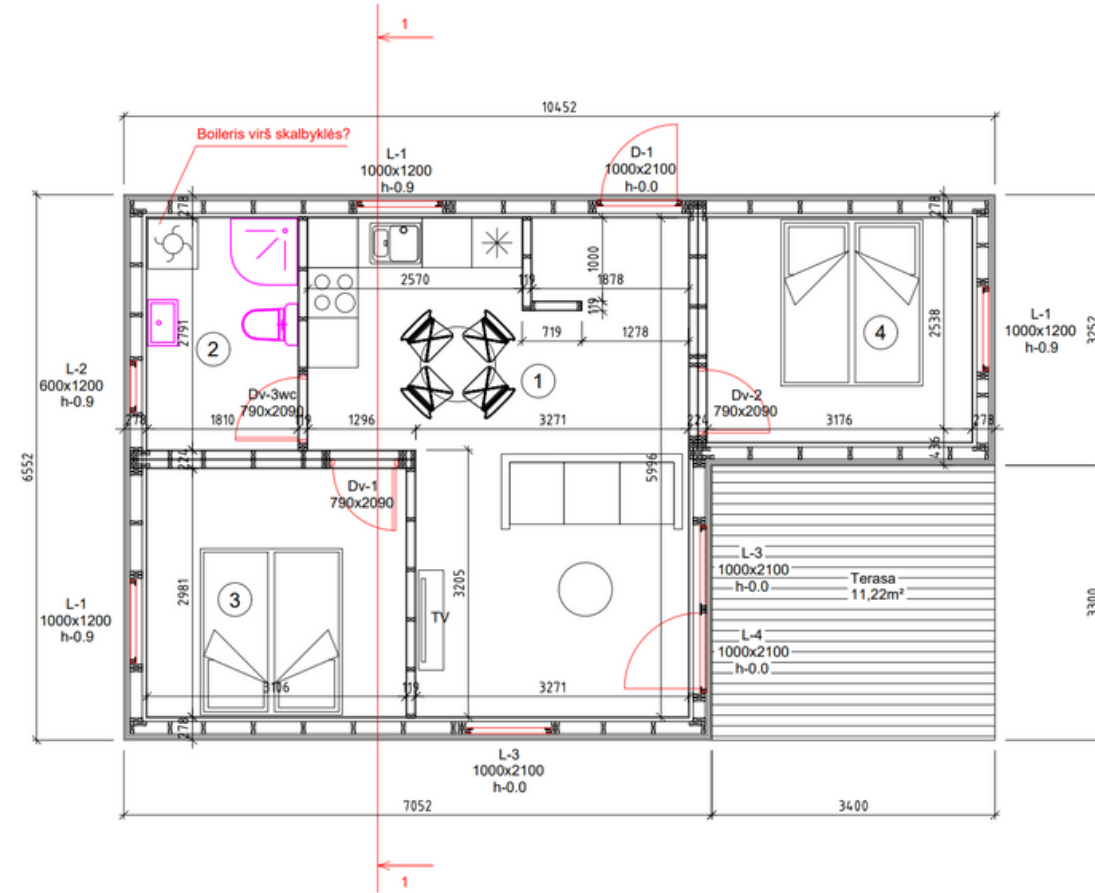
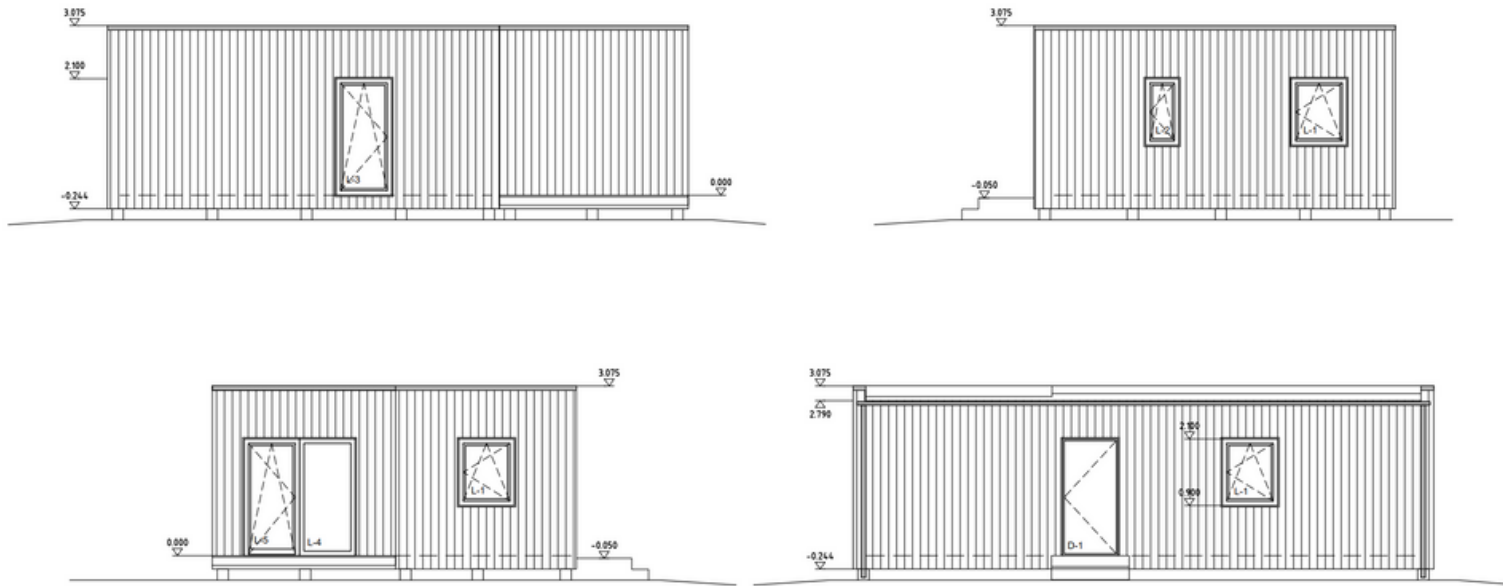
Heating: Aerothermic heating; Hydrothermic heating; Electric radiators; Infrared floor heating.

Price: From 1300 Eur/m² + VAT



Tiny House HY-01

56m²



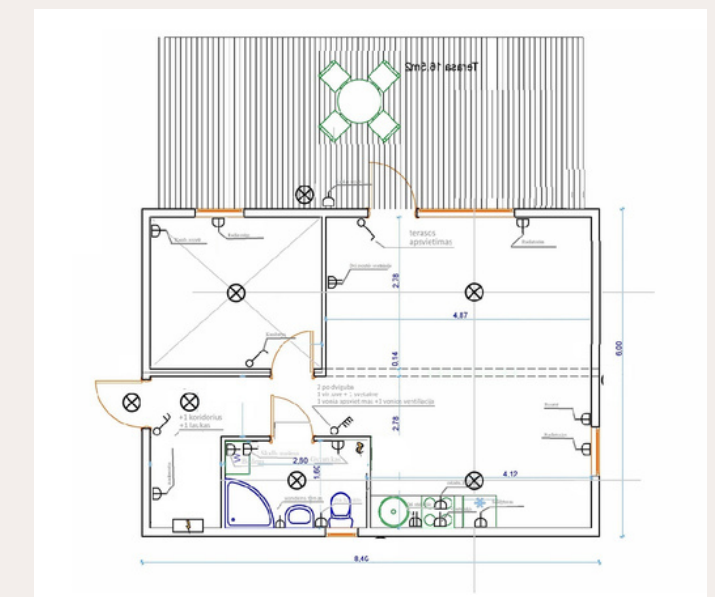
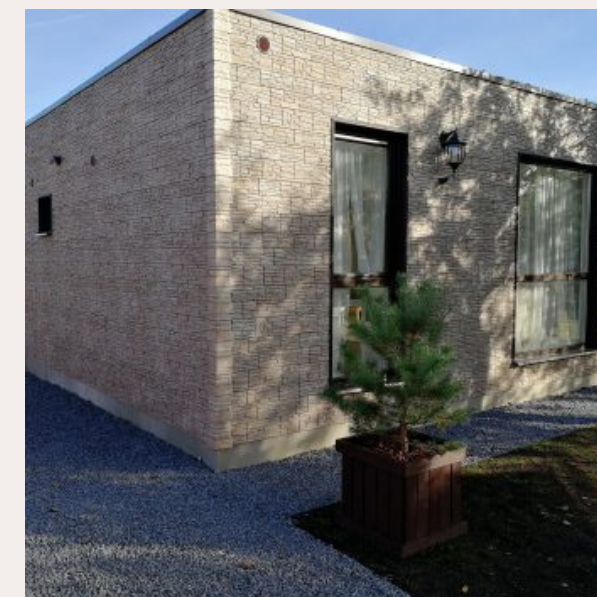
Tiny House HY-02

50m²

Equipment: Fully equipped. Our houses are manufactured with full decoration. The price includes: complete exterior and interior decoration (exterior, interior colors and materials are coordinated with the customer before placing the order. The entire sanitary unit is coordinated (boiler, WC, shower, cabinet with sink, all plumbing), full electricity of the house (lamps, sockets, switches).

Heating: Aerothermic heating; Hydrothermic heating; Electric radiators; Infrared floor heating.

Price: From 1300 Eur/m² + VAT



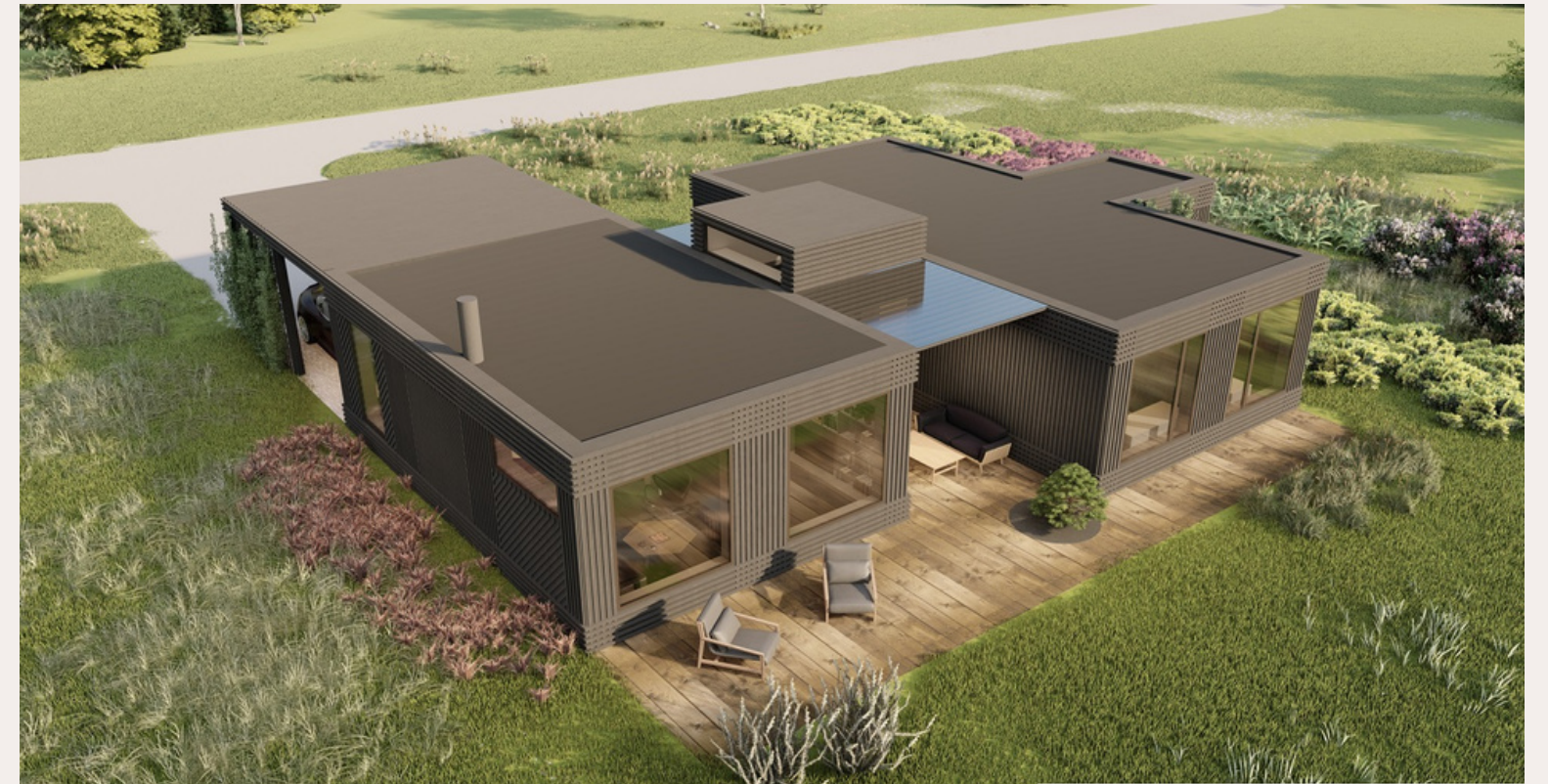
Tiny House HY-03

90m²

Equipment: Fully equipped. Our houses are manufactured with full decoration. The price includes: complete exterior and interior decoration (exterior, interior colors and materials are coordinated with the customer before placing the order. The entire sanitary unit is coordinated (boiler, WC, shower, cabinet with sink, all plumbing), full electricity of the house (lamps, sockets, switches).

Heating: Aerothermic heating; Hydrothermic heating; Electric radiators; Infrared floor heating.

Price: From 1300 Eur/m² + VAT



90m²



Tiny House HY-03



Tiny House HY-04

30m²

Equipment: Fully equipped. Our houses are manufactured with full decoration. The price includes: complete exterior and interior decoration (exterior, interior colors and materials are coordinated with the customer before placing the order. The entire sanitary unit is coordinated (boiler, WC, shower, cabinet with sink, all plumbing), full electricity of the house (lamps, sockets, switches).

Heating: Aerothermic heating; Hydrothermic heating; Electric radiators; Infrared floor heating.

Price: From 1300 Eur/m² + VAT



Tiny House HY-04

18m², 30m²



Tiny House CH-01

43/50/60/102m²

Roof: Metal sheets, PVC membrane
Walls inside: Plywood, wood cladding, gypsum
Walls outside: wood cladding, fiber cement panels, other decorative materials

Windows and doors: PVC, Wood, Aluminum
Heating: Air to air heat pump, Electric heated floors, Air to water heat pump
Ventilation: Natural air supply, Complex heat-recovery system, Local heat – recovery system.

Price: From 1300 Eur/m² + VAT



43/50/60/102m²

Tiny House CH-01



Tiny House CH-02

43/50/60/102m²

Roof: Metal sheets, PVC membrane
Walls inside: Plywood, wood cladding, gypsum
Walls outside: wood cladding, fiber cement panels, other decorative materials

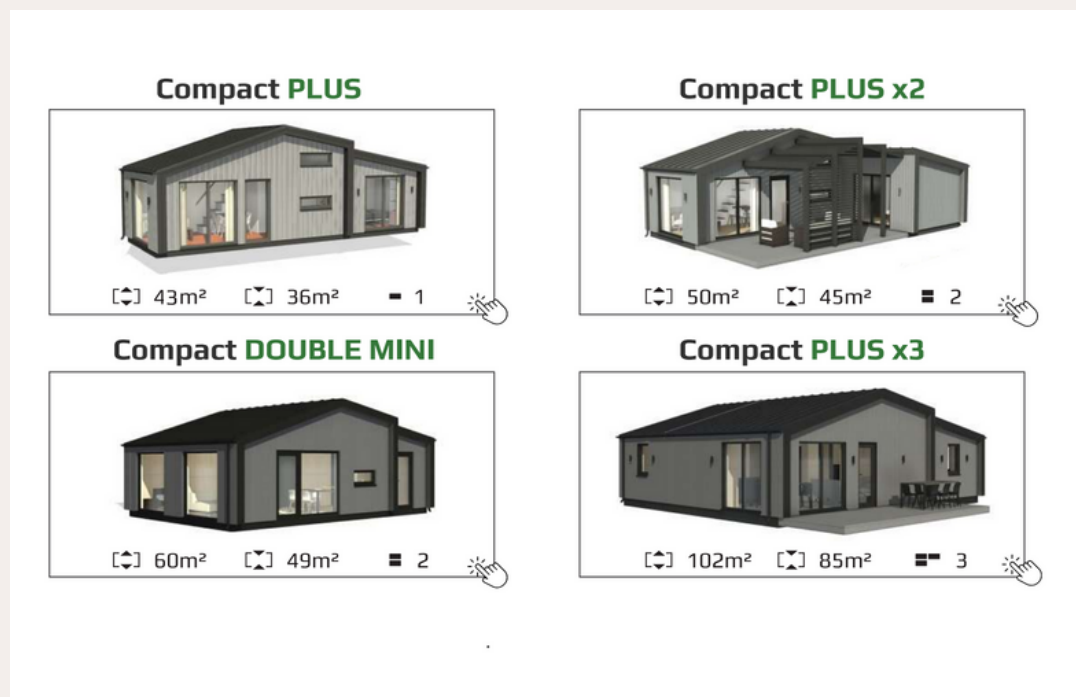
Windows and doors: PVC, Wood, Aluminum
Heating: Air to air heat pump, Electric heated floors, Air to water heat pump
Ventilation: Natural air supply, Complex heat-recovery system, Local heat – recovery system.

Price: From 1300 Eur/m² + VAT



43/50/60/102m²

Tiny House CH-02





Contact us



www.balt-haus.com



+ 31 651 865 671



info@balt-haus.com

<https://www.youtube.com/watch?v=OpBZ95T1DIU>

